

# Universal Chemical Hose Type 45 HW

The **marsoflex**® Universal Chemical Hose Type 45 HW is the perfect hose for the loading and unloading of tank trucks, rail wagons and tank ships. Suitable for the equipping of facilities in the chemical industry.

It is suitable for the suction and discharge of about 95% of all chemical media. For example acids in higher concentrations; bases; solvents containing chlorine and oxygen; mineral oils as well as organic compounds such as alcohols, esters and ketones. Not resistant to fluorinated hydrocarbons, tar, asphalt and LPG.

The **marsoflex**® Universal Chemical Hose Type 45 HW complies with EN 12115.

**Hose tube:** UPE, black, smooth, FDA compliant  
**Hose reinforcements:** High-strength textile braids, kink-resistant spring steel wire spirals  
**Hose cover:** EPDM, black, fabric pattern.  
 Resistant to ozone and weather influences.  
**Electrical resistance:**  $R < 10^6 \Omega$   
**Temperature range:**  $-40^\circ\text{C}$  to  $+100^\circ\text{C}$

**Note:** It is possible to clean the hose when de-pressurised at a maximum temperature of  $130^\circ\text{C}$  for about 30 minutes using steam.

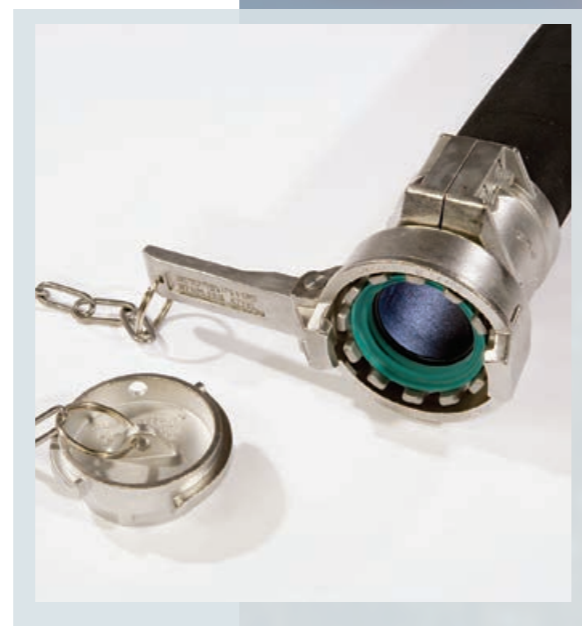
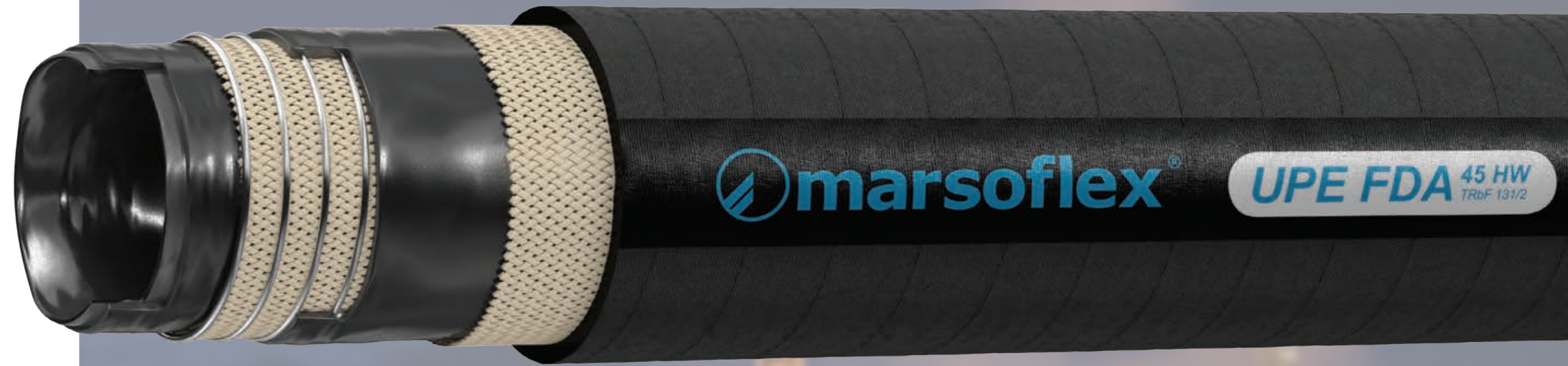
**Roll length:** 40 metres to inner diameter 4" / 100 mm

**Marking:** The **marsoflex**® Universal Chemical Hose Type 45 HW is marked in accordance with EN 12115 and, in addition, with a batch number. Thus traceability is guaranteed at all times.

Test documentation for hose lines assembled in accordance with EN 10204 3.1 as well as classification in accordance with the Pressure Equipment Directive (97 / 23 EC) are included in the scope of delivery.

**marsoflex**® Universal Chemical Hoses Type 45 HW can be equipped with user-specific fittings and couplings.

Technical specifications are subject to change without notice.



| Order-no.  | Inner Ø<br>mm / inch |        | Working<br>pressure* bar | Vacuum*<br>bar | Burst pressure*<br>bar | Test pressure<br>bar | Bending radius*<br>= mm |
|------------|----------------------|--------|--------------------------|----------------|------------------------|----------------------|-------------------------|
| 45 HW 019  | 19                   | 3/4"   | 16 (10)                  | 0.9            | ≥ 64 (40)              | 24 (15)              | 125                     |
| 45 HW 025  | 25                   | 1"     | 16 (10)                  | 0.9            | ≥ 64 (40)              | 24 (15)              | 150                     |
| 45 HW 032  | 32                   | 1 1/4" | 16 (10)                  | 0.9            | ≥ 64 (40)              | 24 (15)              | 175                     |
| 45 HW 038  | 38                   | 1 1/2" | 16 (10)                  | 0.9            | ≥ 64 (40)              | 24 (15)              | 225                     |
| 45 HW 050  | 50                   | 2"     | 16 (10)                  | 0.9            | ≥ 64 (40)              | 24 (15)              | 275                     |
| 45 HW 065  | 63                   | 2 1/2" | 16 (10)                  | 0.9            | ≥ 64 (40)              | 24 (15)              | 320                     |
| 45 HW 075  | 75                   | 3"     | 16 (10)                  | 0.9            | ≥ 64 (40)              | 24 (15)              | 350                     |
| 45 HW 100  | 100                  | 4"     | 16 (10)                  | 0.9            | ≥ 64 (40)              | 24 (15)              | 450                     |
| 45 HW 125* | 125                  | 5"     | 16                       | 0.9            | ≥ 48                   | 24                   | 1000                    |
| 45 HW 150* | 150                  | 6"     | 16                       | 0.9            | ≥ 48                   | 24                   | 1200                    |
| 45 HW 200* | 200                  | 8"     | 16                       | 0.9            | ≥ 48                   | 24                   | 1600                    |

\* = based on to EN 12115  
 ( ) = data acc. to EN 12115