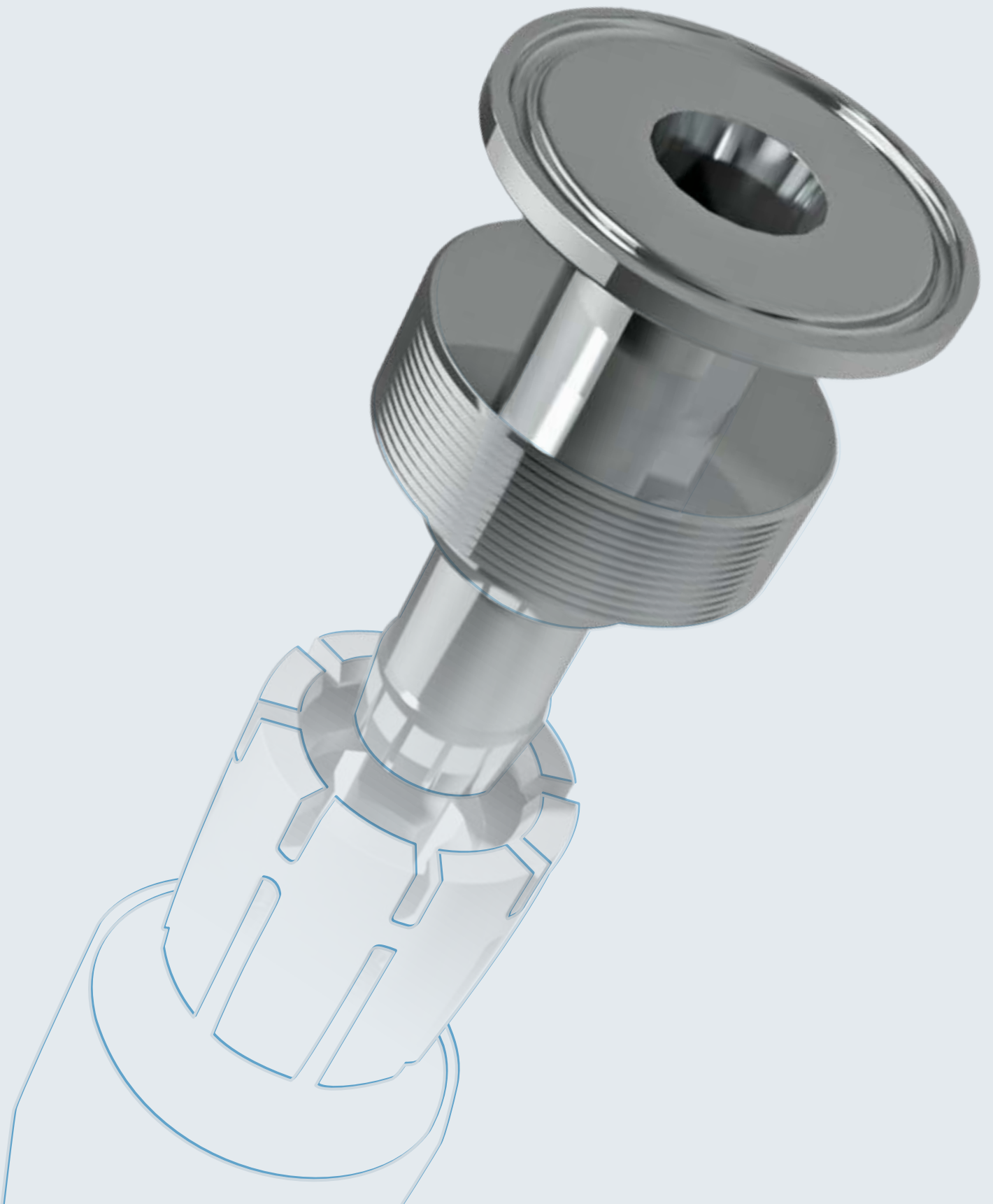


Couplings and Connections



Welcome

We at Markert Group are specialised in manufacturing and sales of high-quality hose and coupling systems as well as textile filters for industrial applications.

Our company is divided into two product divisions: **marsoflex**[®], renowned for particularly high-quality industrial hose lines, and **marsyntex**[®], known for high-quality textile filters. Together, both brands stand for excellent application-specific consulting, for utmost quality in all industrial areas and maximum efficiency and effectiveness.

Production takes place in two state-of-the-art factories at the heart of Europe, certified to ISO 9001/14001. Medium-size structures characterised by the owners, and a qualified team of engineers, business people and production employees guarantee products and customer-supplier relationships on the highest level.

The **marsoflex**[®] brand represents hose systems for safe transport of liquid, gaseous and solid media. Our products provide special solutions for all industrial applications. These include the chemical and petrochemical industry, refineries, the pharmaceutical industry, transporters and fuel depots, the food industry, the entire field of mechanical engineering, including system and apparatus engineering, as well as the steel and foundry industry. The variety of application fields, each with their specific and individual demands, represent high requirements for the hose lines and their couplings.

Arrange for individual and specialised consulting by our employees.

We will convince you through our products with technically compatible components in top quality, through expert consulting and through excellent customer services.

Alfons Markert + Co. GmbH



Otto Markert & Sohn GmbH



Product overview

Aseptic

Aseptic screw connections, milk pipe	4
Aseptic screw connections, milk pipe, heavy design	6
Aseptic clamping connections Tri-Clamp	8
ReLock® - Three-part reusable aseptic screw connections	10

Coupling systems

Tank truck couplings	12
Lever arm couplings	16
Lever arm couplings with lever arm lock	24
System seals	26
Thread seals	28
Hydrant couplings “Storz” system	30
Quick-acting couplings	34
Compressed-air jaw couplings	36

Dry and breakaway couplings

KAMVALOK® dry couplings	38
Breakaway dry couplings	40

Couplings with safety clamps

Male hose tail with safety clamps	42
Female hose tail with safety clamps	44
Universal quick-action fittings	46
Flanged hose fittings	48
Clamps	52

Couplings with safety clamps, heavy designs

Male hose tail with safety clamps	54
Female hose tail with safety clamps	55
Universal quick-action fittings	56
Flanged hose fittings	58
Clamps	60

Connection and fastening systems

Double nipples	62
Reduction nipples	64
Reducers	66
Double sockets, reducing sockets, blind caps, blind plugs	68
Weld-on nipples	70
Flange thread nipples	72

Linings and coatings

Linings and coatings	74
----------------------------	----

Spare parts and accessories

Spare parts and accessories	76
-----------------------------------	----

Technical data

Flange dimensions	78
Thread dimensions	80
Materials	81

Aseptic screw connections, milk pipe

Suitable up to 25 bar operating pressure (PN 25) according to EN 14420/DIN 11851

Male hose tail with safety clamps made of stainless steel, on the one side external thread, on the other side hose fitting with safety collar

Female hose tail with safety clamps made of stainless steel, on the one side swivel nut, on the other side hose fitting with safety collar

Welding nipples made of stainless steel for pipes according to DIN 11866

Conical welding stud made of stainless steel for pipes according to DIN 11866 with union nut

Materials:
For the abbreviation, see Materials register

Other materials upon request



Male hose tail

Order number	DN	Thread DIN 405	Material
VCS 13	13/15	Rd. 34x1/8"	1.4571/1.4404
VCS 19	19/20	Rd. 44x1/6"	1.4571/1.4404
VCS 25	25	Rd. 52x1/6"	1.4571/1.4404
VCS 32	32	Rd. 58x1/6"	1.4571/1.4404
VCS 38	38/40	Rd. 65x1/6"	1.4571/1.4404
VCS 50	50	Rd. 78x1/6"	1.4571/1.4404
VCS 65	63/65	Rd. 95x1/6"	1.4571/1.4404
VCS 75	75	Rd.110x1/4"	1.4571/1.4404
VCS 100	100	Rd.130x1/4"	1.4571/1.4404
VMS 13	13/15	Rd. 34x1/8"	1.4301
VMS 19	19/20	Rd. 44x1/6"	1.4301
VMS 25	25	Rd. 52x1/6"	1.4301
VMS 32	32	Rd. 58x1/6"	1.4301
VMS 38	38/40	Rd. 65x1/6"	1.4301
VMS 50	50	Rd. 78x1/6"	1.4301
VMS 65	63/65	Rd. 95x1/6"	1.4301
VMS 75	75	Rd.110x1/4"	1.4301
VMS 100	100	Rd.130x1/4"	1.4301



Welding nipples made of stainless steel
thread sizes see above

Order number	DN	Standard welding dimensions according to DIN 11850	Material
ANM 34	15	19x1.5	1.4301
ANM 44	20	23x1.5	1.4301
ANM 52	25	29x1.5	1.4301
ANM 58	32	35x1.5	1.4301
ANM 65	40	41x1.5	1.4301
ANM 78	50	53x1.5	1.4301
ANM 95	65	70x2	1.4301
ANM 110	75	85x2	1.4301
ANM 130	100	104x2	1.4301





Female hose tail

Order number	DN	Thread DIN 405	Material
MCS 13	13/15	Rd. 34 x 1/8"	1.4571/1.4404
MCS 19	19/20	Rd. 44 x 1/6"	1.4571/1.4404
MCS 25	25	Rd. 52 x 1/6"	1.4571/1.4404
MCS 32	32	Rd. 58 x 1/6"	1.4571/1.4404
MCS 38	38/40	Rd. 65 x 1/6"	1.4571/1.4404
MCS 50	50	Rd. 78 x 1/6"	1.4571/1.4404
MCS 65	63/65	Rd. 95 x 1/6"	1.4571/1.4404
MCS 75	75	Rd. 110 x 1/4"	1.4571/1.4404
MCS 100	100	Rd. 130 x 1/4"	1.4571/1.4404
MMS 13	13/15	Rd. 34 x 1/8"	1.4301
MMS 19	19/20	Rd. 44 x 1/6"	1.4301
MMS 25	25	Rd. 52 x 1/6"	1.4301
MMS 32	32	Rd. 58 x 1/6"	1.4301
MMS 38	38/40	Rd. 65 x 1/6"	1.4301
MMS 50	50	Rd. 78 x 1/6"	1.4301
MMS 65	63/65	Rd. 95 x 1/6"	1.4301
MMS 75	75	Rd. 110 x 1/4"	1.4301
MMS 100	100	Rd. 130 x 1/4"	1.4301



Conical welding stud

made of stainless steel for pipes
thread sizes see above

Order number	DN	Standard welding dimensions according to DIN 11850	Material
ANMK 15	15	19 x 1.5	1.4301
ANMK 20	20	23 x 1.5	1.4301
ANMK 25	25	29 x 1.5	1.4301
ANMK 32	32	35 x 1.5	1.4301
ANMK 40	40	41 x 1.5	1.4301
ANMK 50	50	53 x 1.5	1.4301
ANMK 70	65	70 x 2	1.4301
ANMK 80	75	85 x 2	1.4301
ANMK 100	100	104 x 2	1.4301

Your notes



Aseptic screw connections, milk pipe, heavy design

Suitable up to 18 bar operating pressure (PN 18) according to EN 14423/DIN 11851

Male hose tail with safety clamps made of stainless steel, on the one side external thread, on the other side hose fitting with safety collar

Female hose tail with safety clamps made of stainless steel, on the one side swivel nut, on the other side hose fitting with safety collar

Materials:
For the abbreviation, see Materials register

Other materials upon request



Female hose tail with safety clamps, heavy design

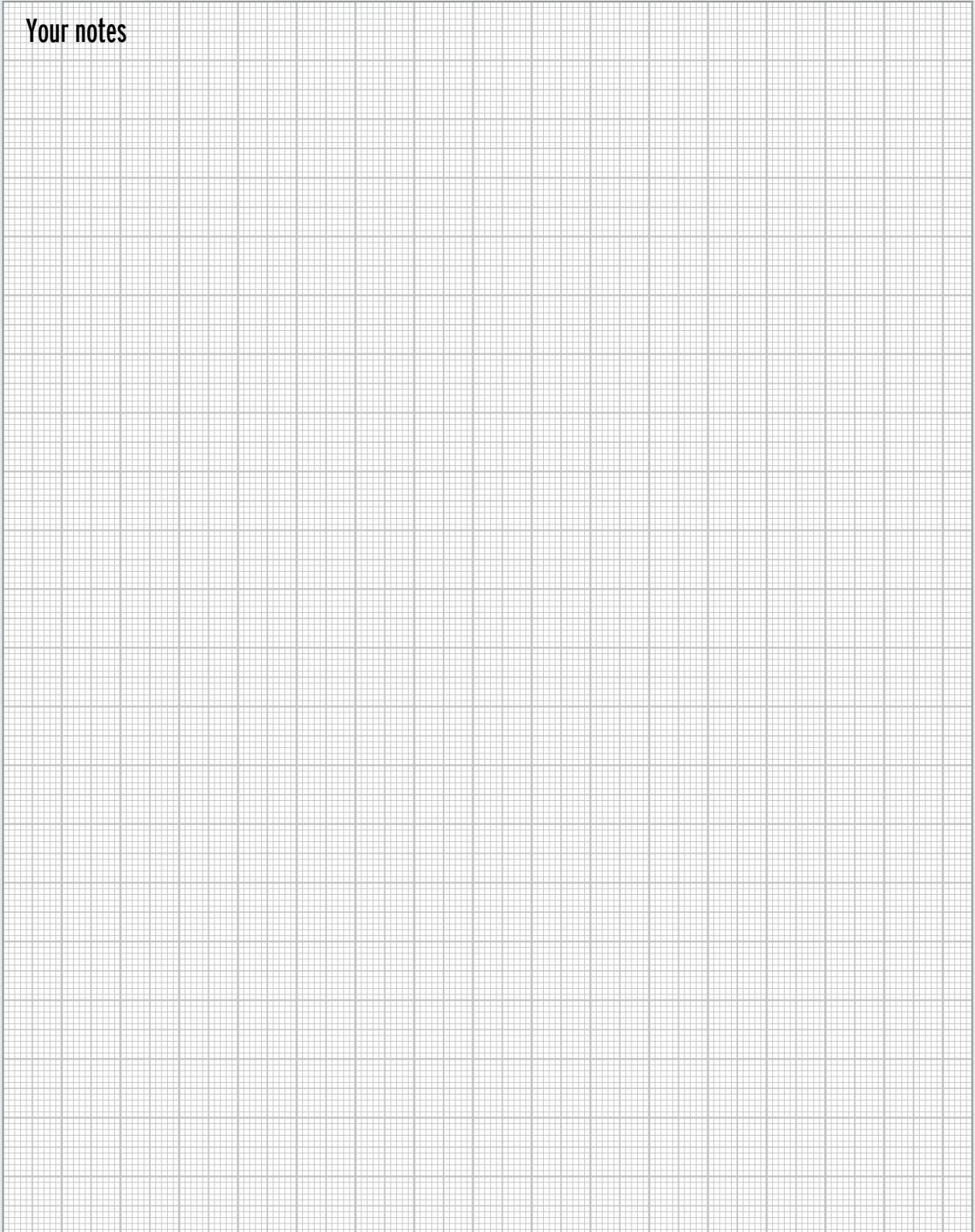
Order number	DN	Thread DIN 405	Material
MMD 13	13/15	Rd. 34x1/8"	1.4301
MMD 19	19/20	Rd. 44x1/6"	1.4301
MMD 25	25	Rd. 52x1/6"	1.4301
MMD 32	32	Rd. 58x1/6"	1.4301
MMD 38	38/40	Rd. 65x1/6"	1.4301
MMD 50	50	Rd. 78x1/6"	1.4301



Male hose tail with safety clamps, heavy design

Order number	DN	Thread DIN 405	Material
VMD 13	13/15	Rd. 34x1/8"	1.4301
VMD 19	19/20	Rd. 44x1/6"	1.4301
VMD 25	25	Rd. 52x1/6"	1.4301
VMD 32	32	Rd. 58x1/6"	1.4301
VMD 38	38/40	Rd. 65x1/6"	1.4301
VMD 50	50	Rd. 78x1/6"	1.4301

Your notes



Aseptic clamping connections Tri-Clamp

Suitable for 10 to 25 bar operating pressure (PN 10 to PN 25)

Safety clamps with aseptic clamping connections according to DIN 32676 (pipe series A, B, C) as well as according to BS 4825 and ISO 2852

Material: Stainless steel

Other connections upon request



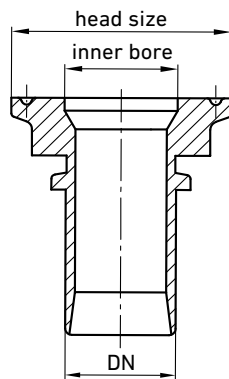
Safety clamps, pipe series A

according to EN 14420 aseptic clamping connections according to DIN 32676

Article	DN	Head size [mm]	Internal bore
TCS	13	34.0	16
	19	34.0	20
	25	50.5	26
	32	50.5	32
	38	50.5	38
	50	64.0	50
	63	91.0	66
	75	106.0	81
	100	119.0	100

Safety clamps, pipe series A/B

according to EN 14420 aseptic clamping connections according to DIN 32676. Pipe series C upon request.



Safety clamps, pipe series B

according to EN 14420 aseptic clamping connections according to DIN 32676

Article	DN Socket	Head size [mm]	Internal bore
TCS	13	50.5	18.1
	19	50.5	23.7
	25	50.5	29.7
	32	64.0	38.4
	38	64.0	44.3
	50	77.5	56.3
	63	91.0	72.1
	75	106.0	84.3

Surface quality DIN 11864-1 (Ra in µm)

Hygiene class	Internal surface	External surface
H3	< 0.8	< 1.0
H4	< 0.4	< 1.0

More safety clamps with aseptic connections according to DIN 11864 (-1,-2,-3) in pipe series A, B and C.

Our fittings are made of stainless steel according to DIN 11864-1, optionally in hygiene classes H3 or H4



Safety clamps PN 25

According to EN 14420 with aseptic liner, according to DIN 11864-1, pipe series A with union nuts

Article	DN	Thread
ASM13A	13	Rd. 34x1/8"
ASM19A	19	Rd. 44x1/6"
ASM25A	25	Rd. 52x1/6"
ASM32A	32	Rd. 58x1/6"
ASM38A	38	Rd. 65x1/6"
ASM50A	50	Rd. 78x1/6"
ASM65A	63	Rd. 95x1/6"
ASM75A	75	Rd. 110x1/4"
ASM100A	100	Rd. 130x1/4"



Safety clamps PN 25

according to EN14420 with aseptic threaded connector according to DIN 11864-1, pipe series A

Article	DN	Thread
ASV13A	13	Rd. 34x1/8"
ASV20A	19	Rd. 44x1/6"
ASV25A	25	Rd. 52x1/6"
ASV32A	32	Rd. 58x1/6"
ASV38A	38	Rd. 65x1/6"
ASV50A	50	Rd. 78x1/6"
ASV65A	63	Rd. 95x1/6"
ASV75A	75	Rd. 110x1/4"
ASV100A	100	Rd. 130x1/4"



Safety clamps PN 10 to PN 25 nominal width-dependent, according to EN 14420 with aseptic collar flange according to DIN 11864-2, pipe series A

Article	DN	Flange size [mm]
ASFB13A	13	59.0
ASFB19A	19	64.0
ASFB25A	25	70.0
ASFB32A	32	76.0
ASFB38A	38	82.0
ASFB50A	50	94.0
ASFB65A	63	113.0
ASFB75A	75	133.0
ASFB100A	100	159.0



Safety clamps PN 10 to PN 25 nominal width-dependent, according to EN 14420 with aseptic groove flange according to DIN 11864-2, pipe series A

Article	DN	Flange size [mm]
ASFN13A	13	59.0
ASFN19A	19	64.0
ASFN25A	25	70.0
ASFN32A	32	76.0
ASFN38A	38	82.0
ASFN50A	50	94.0
ASFN65A	63	113.0
ASFN75A	75	133.0
ASFN100A	100	159.0



Safety clamps, PN 16 to PN 40

according to EN 14420 with aseptic clamp ferrule with groove according to DIN 11864-3

Article	DN
ASNKS13A	13
ASNKS20A	19
ASNKS25A	25
ASNKS32A	32
ASNKS38A	38
ASNKS50A	50
ASNKS65A	63
ASNKS75A	75
ASNKS100A	100



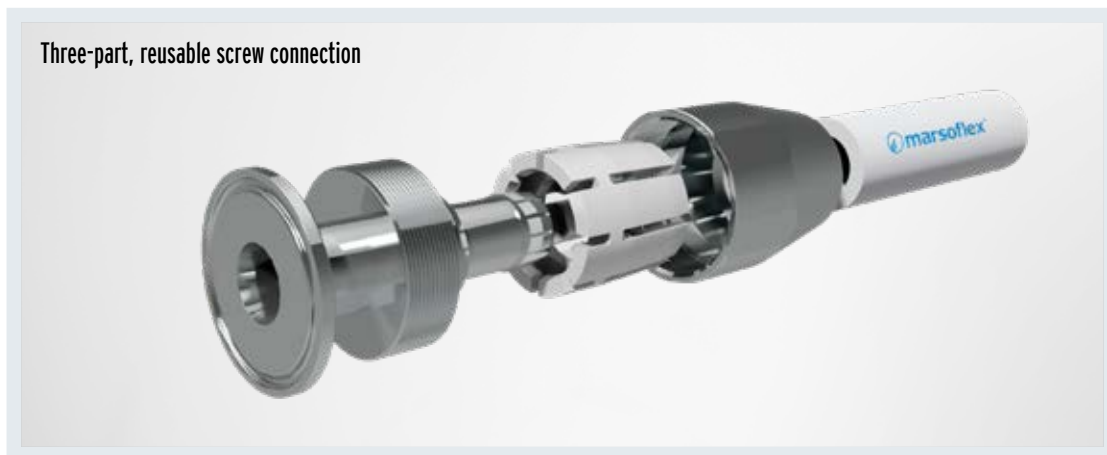
Safety clamps PN 16 to PN 40

according to EN14420 with aseptic clamp ferrule according to DIN 11864-3

Article	DN
ASBK13A	13
ASBK19A	19
ASBK25A	25
ASBK32A	32
ASBK38A	38
ASBK50A	50
ASBK65A	63
ASBK75A	75
ASBK100A	100

ReLock®

Three-part, reusable screw connection



Three-part, consisting of: Socket with aseptic fitting (made of stainless steel), clamping ring (made of PVDF) and the screwed socket (made of stainless steel or PVDF)

The sockets are available with div. aseptic connections (in the pipe series A,B or C) (e.g. with TCS according to DIN 32676, groove flange according to DIN 11864-2).

Suitable for **marsoflex**® silicone hoses type 200 and type 300 as well as for **marsoflex**® silicone hose with PTFE core type 300 PTFE.

Our fittings are made according to DIN 11864-1, optionally in hygiene classes H3 or H4.

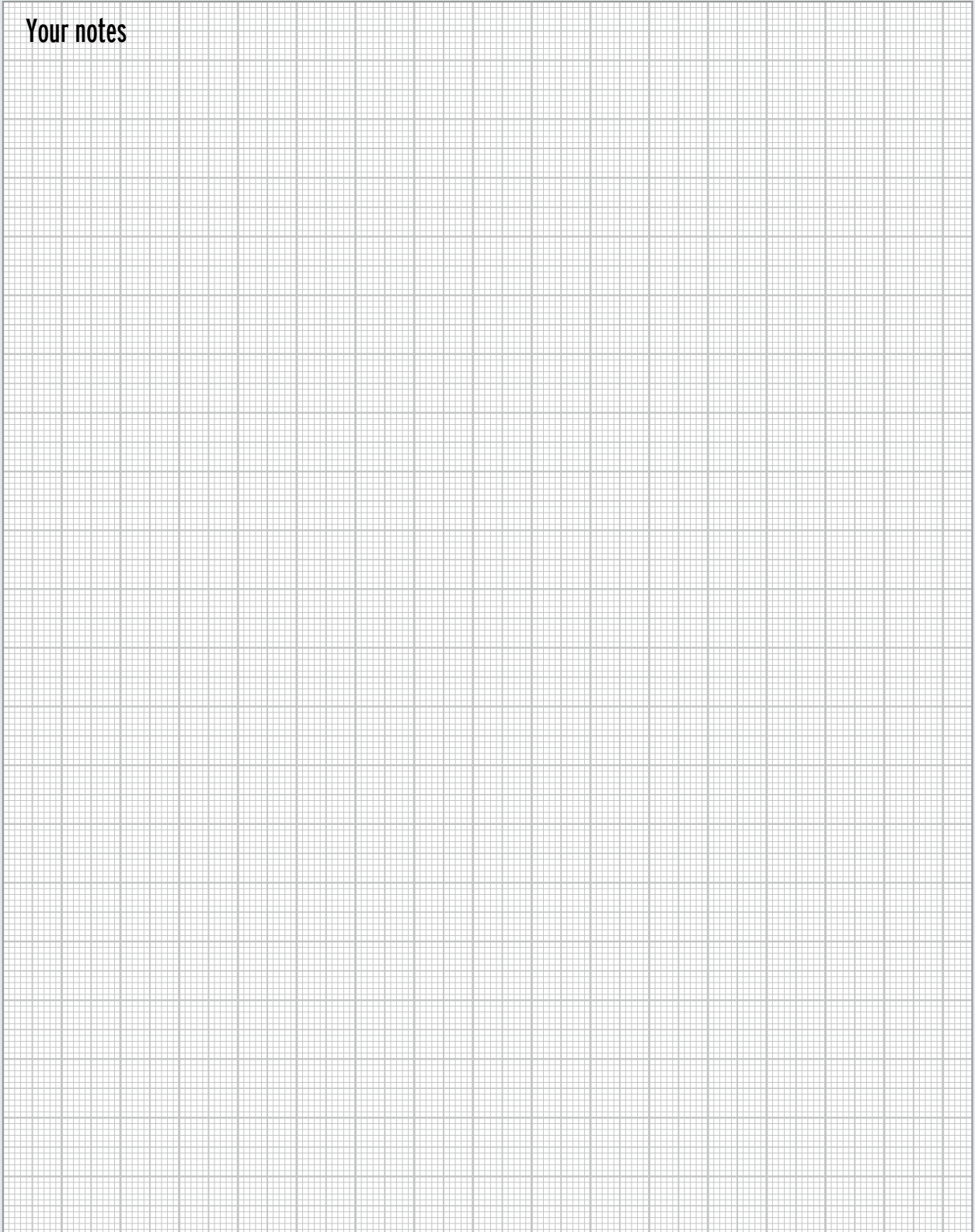
Other connections upon request

Surface quality DIN 11864-1 (Ra in µm)

Hygiene class	Internal surface	External surface
H3	< 0.8	< 1.0
H4	< 0.4	< 1.0

Article	DN
3TLG08	8
3TLG10	10
3TLG13	13
3TLG20	20
3TLG25	25
3TLG32	32
3TLG38	38
3TLG50	50

Your notes



Tank truck couplings according to EN 14420-6

In Europe, the tank truck coupling is the most frequently used connection fitting in the industry and the eponymous area, the transport of liquid goods. The tank truck couplings are produced according to EN 14420-6. The system consists of the male part (VK), also referred to as cam and the two-part female part (MK), also referred to as sealing ring unit and clamping ring.


The fitting is available for the nominal widths 2", 3" and for 4" made of the materials stainless steel and brass. Apart from that, we offer the PTFE-lined variant, see page 74. The coupling distinguishes itself by the simple and safe handling.


According to EN 14420-6 DN 50 (2") and DN 80 (3") DN 100 (4") suitable for an operating pressure of 16 bar (PN 16)


Thread: G = ISO 228-1


Materials:

For the abbreviation, see Materials register

 One-part female coupling with DN 50 and DN 80 socket		
Order number	Material	Seal material
MKS 50 SS	SS	CSM
MKS 50 SSH	SS/H	CSM
MKS 80 SS	SS	CSM
MKS 80 SSH	SS/H	CSM

 Female coupling		
Order number	Material	Seal material
MK 50 SS	SS	PTFE/CSM
MK 50 SSH	SS/H	PTFE/CSM
MK 50 SSP	SS/P	FKM/CSM
MK 50 SSTE	SS/TE	PTFE/CSM
MK 50 MS	MS	PUR/NBR
MK 80 SS	SS	PTFE/CSM
MK 80 SSH	SS/H	PTFE/CSM
MK 80 SSP	SS/P	FKM/CSM
MK 80 SSTE	SS/TE	PTFE/CSM
MK 80 MS	MS	PUR/NBR

 Male coupling		
Order number	Material	Seal material
VK 50 SS	SS	PTFE
VK 50 SSH	SS/H	PTFE
VK 50 SSP	SS/P	FKM
VK 50 SSTE	SS/TE	PTFE
VK 50 MS	MS	VU
VK 80 SS	SS	PTFE
VK 80 SSH	SS/H	PTFE
VK 80 SSP	SS/P	FKM
VK 80 SSTE	SS/TE	PTFE
VK 80 MS	MS	VU

 One-part male coupling DN 50 and DN 80 with socket	
Order number	Material
VKS 50 SS	SS
VKS 50 SSH	SS/H
VKS 80 SS	SS
VKS 80 SSH	SS/H



Sealing ring unit

Order number	Material	Seal material
TWK 50 SS	SS	PTFE/CSM
TWK 50 SSH	SS/H	PTFE/CSM
TWK 50 SSP	SS/P	FKM/CSM
TWK 50 SSTE	SS/TE	PTFE/CSM
TWK 50 MS	MS	PUR/NBR
TWK 80 SS	SS	PTFE/CSM
TWK 80 SSH	SS/H	PTFE/CSM
TWK 80 SSP	SS/P	FKM/CSM
TWK 80 SSTE	SS/TE	PTFE/CSM
TWK 80 MS	MS	PUR/NBR




Clamping rings DN 50 and DN 80

Order number	Material
TWS 50 SS	SS
TWS 50 MS	MS
TWS 80 SS	SS
TWS 80 MS	MS

Your notes


Grid area for notes

Tank truck couplings according to EN 14420-6




Female coupling
with socket and safety collar DN 100 according to EN 14420-2

Order number	Material	Seal material
MKS 100 SS	SS	PTFE/HY
MKS 100 SSH	SS/H	PTFE/HY
MKS 100 MS	MS	VU/PE




Male coupling
with socket and safety collar DN 100 according to EN 14420-2

Order number	Material	Seal material
VKS 100 SS	SS	PTFE
VKS 100 SSH	SS/H	PTFE
VKS 100 MS	MS	VU




Female coupling

Order number	Material	Seal material
MK 100 SS	SS	PTFE/HY
MK 100 SSH	SS/H	PTFE/HY
MK 100 MS	MS	VU/PE



Male coupling

Order number	Material	Seal material
VK 100 SS	SS	PTFE
VK 100 SSH	SS/H	PTFE
VK 100 MS	MS	VU



Plug for female coupling

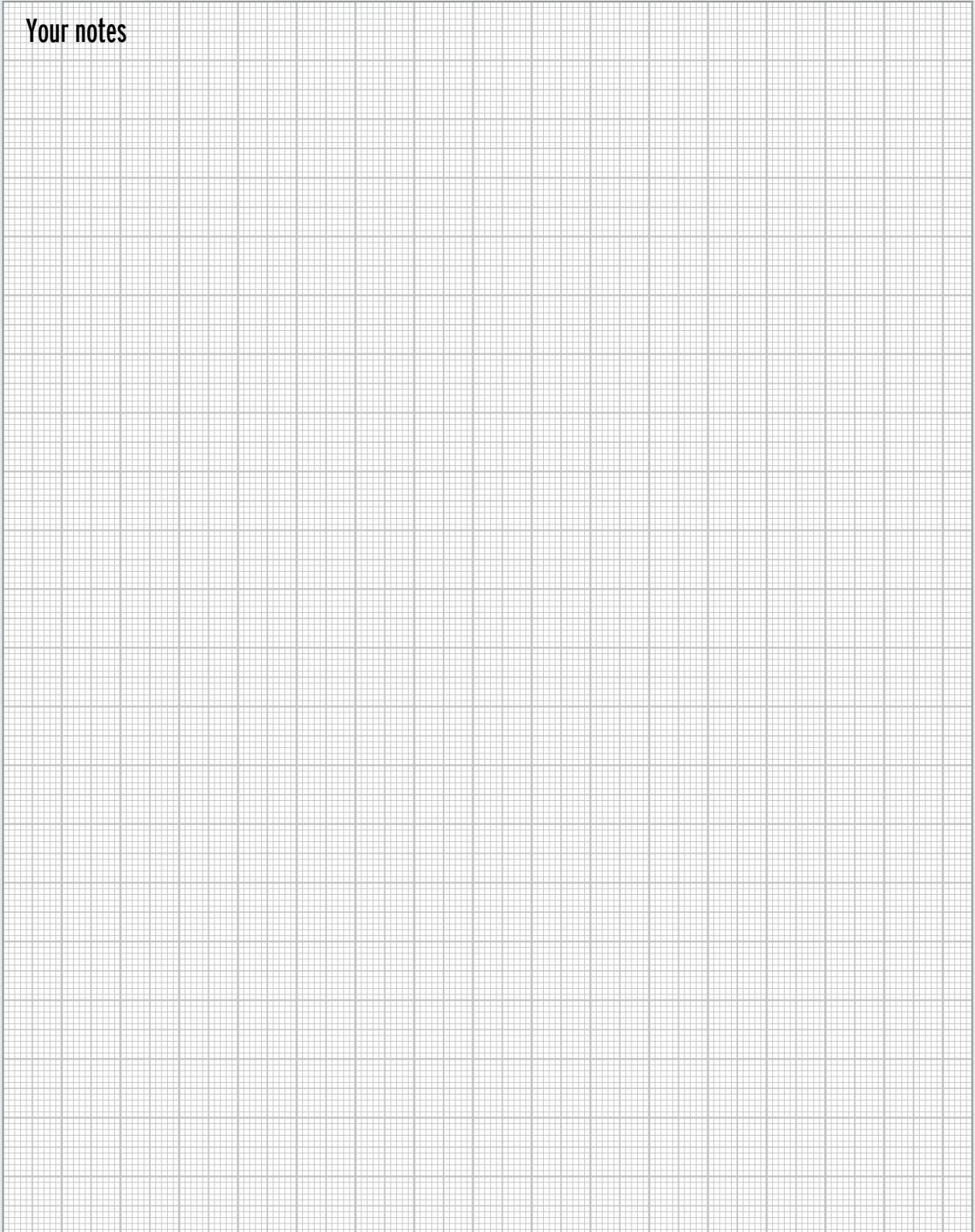
Order number	Materials	Seal material
VB 50 SS	SS	
VB 50 SSH	SS/H	
VB 50 SSP	SS/P	
VB 50 MS	MS	
VB 50 AL	AL	
VB 80 SS	SS	
VB 80 SSH	SS/H	
VB 80 SSP	SS/P	
VB 80 MS	MS	
VB 80 AL	AL	
VB 80 PA	PA	
VB 100 SS	SS	
VB 100 SSH	SS/H	
VB 100 AL	AL	
VB 100 PA	PA	



Caps for male couplings

Order number	Materials	Seal material
MB 50 SS	SS	CSM
MB 50 SSH	SS/H	CSM
MB 50 SSP	SS/P	FKM
MB 50 MS	MS	PUR
MB 50 AL	AL	NBR
MB 80 SS	SS	CSM
MB 80 SSH	SS/H	CSM
MB 80 SSP	SS/P	FKM
MB 80 MS	MS	PUR
MB 80 AL	AL	NBR
MB 100 SS	SS	CSM
MB 100 SSH	SS/H	CSM
MB 100 AL	AL	NBR

Your notes



Lever arm couplings according to EN 14420-7

The lever arm coupling is internationally the most frequently used quick coupling for the connection of hoses and pipelines. It is also referred to as Kamlok coupling. This fitting originally comes from an American military standard. The lever arm couplings are produced according to EN 14420-7, previously according to DIN 2828.

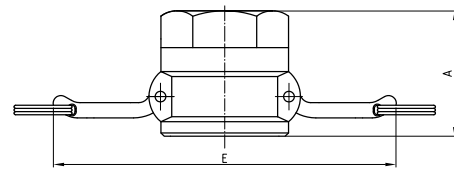
Due to the many different designs in the field of transportation of liquids and solids, the possible applications of Kamlok couplings are very diverse.

The system consists of a male part with a concave external contour, which is coupled in the female part by the movement of two concentric levers. Positioning of the coupling parts is not necessary and thus, fast and simple connection of the fittings is possible. The fitting is available in the nominal widths DN 13 to DN 100 made of the materials: stainless steel, brass, aluminium and plastic. Due to the international markets which often differ from the European standards with regard to dimension specification and quality, EN 14420-7-compliant design must particularly be ensured in the stainless steel area.

Apart from that, we offer the PTFE-lined variant (see page 74).

Lever arm coupling

Female part with internal thread



Article	Nominal width	A	E
KKD12	13–1/2"	43	103
KKD34	20–3/4"	46.5	110
KKD10	25–1"	54	125
KKD32	32–1 1/4"	61	180
KKD38	38–1 1/2"	67	190
KKD20	50–2"	75	200
KKD65	65–2 1/2"	77.5	210
KKD30	80–3"	83	250
KKD40	100–4"	85.5	290



Male coupling with internal thread

Order number	Size	Operating pressure [bar]	Thread	Material
KKA 12 SS KKA 12 MS	DN 13–1/2"	16 16	G 1/2	SS MS
KKA 34 SS KKA 34 MS	DN 20–3/4"	16 16	G 3/4	SS MS
KKA 10 SS KKA 10 MS KKA 10 PP	DN 25–1"	16 16 6	G 1	SS MS PP
KKA 32 SS KKA 32 MS	DN 32– 1 1/4"	16 16	G 1 1/4	SS MS
KKA 38 SS KKA 38 MS KKA 38 PP	DN 40– 1 1/2"	16 16 6	G 1 1/2	SS MS PP
KKA 20 SS KKA 20 MS KKA 20 PP	DN 50–2"	16 16 6	G 2	SS MS PP
KKA 65 SS KKA 65 MS	DN 65– 2 1/2"	16 16	G 2 1/2	SS MS
KKA 30 SS KKA 30 MS	DN 80–3"	16 16	G 3	SS MS
KKA 40 SS KKA 40 MS	DN 100–4"	16 16	G 4	SS MS



Female coupling with internal thread

Order number	Size	Operating pressure [bar]	Thread	Material
KKD 12 SS KKD 12 MS	DN 13–1/2"	16 16	G 1/2	SS MS
KKD 34 SS KKD 34 MS	DN 20–3/4"	16 16	G 3/4	SS MS
KKD 10 SS KKD 10 MS KKD 10 PP	DN 25–1"	16 16 6	G 1	SS MS PP
KKD 32 SS KKD 32 MS	DN 32– 1 1/4"	16 16	G 1 1/4	SS MS
KKD 38 SS KKD 38 MS KKD 38 PP	DN 40– 1 1/2"	16 16 6	G 1 1/2	SS MS PP
KKD 20 SS KKD 20 MS KKD 20 PP	DN 50–2"	16 16 6	G 2	SS MS PP
KKD 65 SS KKD 65 MS	DN 65– 2 1/2"	16 16	G 2 1/2	SS MS
KKD 30 SS KKD 30 MS	DN 80–3"	16 16	G 3	SS MS
KKD 40 SS KKD 40 MS	DN 100–4"	16 16	G 4	SS MS

According to EN 14420-7 for PN 6 to PN 16
with flat seal according to DIN EN 14420-5

Thread seals: Polyurethane
in case of stainless steel or PTFE
System seal: PUR
in case of stainless steel: CSM

Thread: G = ISO 228-1

Materials:
For the abbreviation, see Materials register

Other materials upon request



Lever arm couplings according to EN 14420-7



Male coupling
with external thread

Order number	Size	Operating pressure [bar]	Thread	Material
KKF 12 SS KKF 12 MS	DN 13–1/2"	16 16	R 1/2	SS MS
KKF 34 SS KKF 34 MS	DN 20–3/4"	16 16	R 3/4	SS MS
KKF 10 SS KKF 10 MS KKF 10 PP	DN 25–1"	16 16 6	R 1	SS MS PP
KKF 32 SS KKF 32 MS	DN 32– 1 1/4"	16 16	R 1 1/4	SS MS
KKF 38 SS KKF 38 MS KKF 38 PP	DN 40– 1 1/2"	16 16 6	R 1 1/2	SS MS PP
KKF 20 SS KKF 20 MS KKF 20 PP	DN 50–2"	16 16 6	R 2	SS MS PP
KKF 65 SS KKF 65 MS	DN 65– 2 1/2"	16 16	R 2 1/2	SS MS
KKF 30 SS KKF 30 MS	DN 80–3"	16 16	R 3	SS MS
KKF 40 SS KKF 40 MS	DN 100–4"	16 16	R 4	SS MS



Female coupling
with external thread

Order number	Size	Operating pressure [bar]	Thread	Material
KKB 12 SS KKB 12 MS	DN 13–1/2"	16 16	R 1/2	SS MS
KKB 34 SS KKB 34 MS	DN 20–3/4"	16 16	R 3/4	SS MS
KKB 10 SS KKB 10 MS KKB 10 PP	DN 25–1"	16 16 6	R 1	SS MS PP
KKB 32 SS KKB 32 MS	DN 32– 1 1/4"	16 16	R 1 1/4	SS MS
KKB 38 SS KKB 38 MS KKB 38 PP	DN 40– 1 1/2"	16 16 6	R 1 1/2	SS MS PP
KKB 20 SS KKB 20 MS KKB 20 PP	DN 50–2"	16 16 6	R 2	SS MS PP
KKB 65 SS KKB 65 MS	DN 65– 2 1/2"	16 16	R 2 1/2	SS MS
KKB 30 SS KKB 30 MS	DN 80–3"	16 16	R 3	SS MS
KKB 40 SS KKB 40 MS	DN 100–4"	16 16	R 4	SS MS

According to EN 14420-7 for PN 6 to PN 16 with conical external thread according to ISO 7-1

System seals: NBR
in case of stainless steel: CSM

Thread: R = ISO 7-1

Materials:
For the abbreviation, see Materials register

Other materials upon request





Male coupling with hose fitting
and safety collar according to DIN EN 14420-2

Order number	Size	Operating pressure [bar]	Material
KKES 12 SS KKES 12 MS	DN 13–1/2"	16 16	SS MS
KKES 34 SS KKES 34 MS	DN 20–3/4"	16 16	SS MS
KKES 10 SS KKES 10 MS KKES 10 PP	DN 25–1"	16 16 6	SS MS PP
KKES 32 SS KKES 32 MS	DN 32– 1 1/4"	16 16	SS MS
KKES 38 SS KKES 38 MS KKES 38 PP	DN 40– 1 1/2"	16 16 6	SS MS PP
KKES 20 SS KKES 20 MS KKES 20 PP	DN 50–2"	16 16 6	SS MS PP
KKES 65 SS KKES 65 MS	DN 65– 2 1/2"	16 16	SS MS
KKES 30 SS KKES 30 MS	DN 80–3"	16 16	SS MS
KKES 40 SS KKES 40 MS	DN 100–4"	16 16	SS MS



Female coupling with hose fitting
and safety collar according to DIN EN 14420-2

Order number	Size	Operating pressure [bar]	Material
KKCS 12 SS KKCS 12 MS	DN 13–1/2"	16 16	SS MS
KKCS 34 SS KKCS 34 MS	DN 20–3/4"	16 16	SS MS
KKCS 10 SS KKCS 10 MS KKCS 10 PP	DN 25–1"	16 16 6	SS MS PP
KKCS 32 SS KKCS 32 MS	DN 32– 1 1/4"	16 16	SS MS
KKCS 38 SS KKCS 38 MS KKCS 38 PP	DN 40– 1 1/2"	16 16 6	SS MS PP
KKCS 20 SS KKCS 20 MS KKCS 20 PP	DN 50–2"	16 16 6	SS MS PP
KKCS 65 SS KKCS 65 MS	DN 65– 2 1/2"	16 16	SS MS
KKCS 30 SS KKCS 30 MS	DN 80–3"	16 16	SS MS
KKCS 40 SS KKCS 40 MS	DN 100–4"	16 16	SS MS

According to EN 14420-7 for PN 6 to PN 16
with whose fitting for half-clamp cover

System seals: NBR
in case of stainless steel: CSM

Materials:
For the abbreviation, see Materials register

Other materials upon request



Lever arm couplings according to EN 14420-7



Male coupling
with fixed flange according to EN 1092-1

Order number	Size	Flange	Operating pressure [bar]	Material
KKLAS 12 ST KKLAS 12 SS	DN 13–1/2"	DN 15 PN 16	16 16	ST SS
KKLAS 34 ST KKLAS 34 SS	DN 20–3/4"	DN 20 PN 16	16 16	ST SS
KKLAS 10 ST KKLAS 10 SS	DN 25–1"	DN 25 PN 16	16 16	ST SS
KKLAS 32 ST KKLAS 32 SS	DN 32– 1 1/4"	DN 32 PN 16	16 16	ST SS
KKLAS 38 ST KKLAS 38 SS	DN 40–1 1/2"	DN 40 PN 16	16 16	ST SS
KKLAS 20 ST KKLAS 20 SS	DN 50–2"	DN 50 PN 16	16 16	ST SS
KKLAS 65 ST KKLAS 65 SS	DN 65–2 1/2"	DN 65 PN 16	16 16	ST SS
KKLAS 30 ST KKLAS 30 SS	DN 80–3"	DN 80 PN 16	16 16	ST SS
KKLAS 40 ST KKLAS 40 SS	DN 100–4"	DN 100 PN 16	16 16	ST SS



Female coupling
with fixed flange according to EN 1092-1

Order number	Size	Flange	Operating pressure [bar]	Material
KKLBS 12 SS	DN 13–1/2"	DN 15 PN 16	16	SS
KKLBS 34 SS	DN 20–3/4"	DN 20 PN 16	16	SS
KKLBS 10 SS	DN 25–1"	DN 25 PN 16	16	SS
KKLBS 32 SS	DN 32–1 1/4"	DN 32 PN 16	16	ST SS
KKLBS 38 SS	DN 40–1 1/2"	DN 40 PN 16	16	SS
KKLBS 20 SS	DN 50–2"	DN 50 PN 16	16	SS
KKLBS 65 SS	DN 65–2 1/2"	DN 65 PN 16	16	SS
KKLBS 30 SS	DN 80–3"	DN 80 PN 16	16	SS
KKLBS 40 SS	DN 100–4"	DN 100 PN 16	16	SS

According to EN 14420-7 up to PN 16 with fixed flanges according to EN 1092-1 or ASME B 16.1

System seals: CSM

Materials:

For the abbreviation, see Materials register

Other materials upon request





Plugs

Order number	Size	Operating pressure [bar]	Material
KKDP 12 SS KKDP 12 MS	DN 13–1/2"	16 16	SS MS
KKDP 34 SS KKDP 34 MS	DN 20–3/4"	16 16	SS MS
KKDP 10 SS KKDP 10 MS KKDP 10 PP	DN 25–1"	16 16 6	SS MS PP
KKDP 32 SS KKDP 32 MS	DN 32–1 1/4"	16 16	SS MS
KKDP 38 SS KKDP 38 MS KKDP 38 PP	DN 40–1 1/2"	16 16 6	SS MS PP
KKDP 20 SS KKDP 20 MS KKDP 20 PP	DN 50–2"	16 16 6	SS MS PP
KKDP 65 SS KKDP 65 MS	DN 65–2 1/2"	16 16	SS MS
KKDP 30 SS KKDP 30 MS	DN 80–3"	16 16	SS MS
KKDP 40 SS KKDP 40 MS	DN 100–4"	16 16	SS MS



Caps

Order number	Size	Operating pressure [bar]	Material
KKDC 12 SS KKDC 12 MS	DN 13–1/2"	16 16	SS MS
KKDC 34 SS KKDC 34 MS	DN 20–3/4"	16 16	SS MS
KKDC 10 SS KKDC 10 MS KKDC 10 PP	DN 25–1"	16 16 6	SS MS PP
KKDC 32 SS KKDC 32 MS	DN 32–1 1/4"	16 16	SS MS
KKDC 38 SS KKDC 38 MS KKDC 38 PP	DN 40–1 1/2"	16 16 6	SS MS PP
KKDC 20 SS KKDC 20 MS KKDC 20 PP	DN 50–2"	16 16 6	SS MS PP
KKDC 65 SS KKDC 65 MS	DN 65–2 1/2"	16 16	SS MS
KKDC 30 SS KKDC 30 MS KKDC 30 AL	DN 80–3"	16 16 10	SS MS AL
KKDC 40 SS KKDC 40 MS	DN 100–4"	16 16	SS MS

According to EN 14420-7 for PN 6 to PN 16

System seals: NBR
in case of stainless steel: CSM

Materials:
For the abbreviation, see Materials register

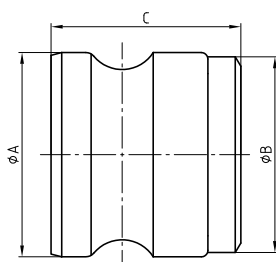
Other materials upon request



Lever arm couplings according to EN 14420-7

Lever arm coupling

Male part with weld-on chamfer according to ISO 1127



Article	Nominal width	Ø A	Weld-on dimension Ø B	C
KKAW34	20–3/4"	32.1	26.9x2.3	37
KKAW10	25–1"	36.7	33.7x2	43.5
KKAW32	32–1 1/4"	45.5	42.4x2.6	50
KKAW38	38–1 1/2"	53.4	48.3x2.6	51.5
KKAW20	50–2"	63	60.3x2.9	57.5
KKAW65	65–2 1/2"	75.8	75.8x2.9	59.5
KKAW30	80–3"	91.5	88.9x3.2	60
KKAW40	100–4"	119.5	114.3x3.6	65

According to EN 14420-7 up to PN 16 with weld-on ends according to ISO 1127

System seals: NBR
in case of stainless steel: CSM

Materials:
For the abbreviation, see Materials register

Other materials upon request



Female coupling

with weld-on ends according to ISO 1127

Order number	Size	Operating pressure [bar]	Material
KKDW 34 SS	DN 20–3/4"	16	SS
KKDW 10 SS	DN 25–1"	16	SS
KKDW 32 SS	DN 32–1 1/4"	16	SS
KKDW 38 SS	DN 40–1 1/2"	16	SS
KKDW 20 SS	DN 50–2"	16	SS
KKDW 65 SS	DN 65–2 1/2"	16	SS
KKDW 30 SS	DN 80–3"	16	SS
KKDW 40 SS	DN 100–4"	16	SS

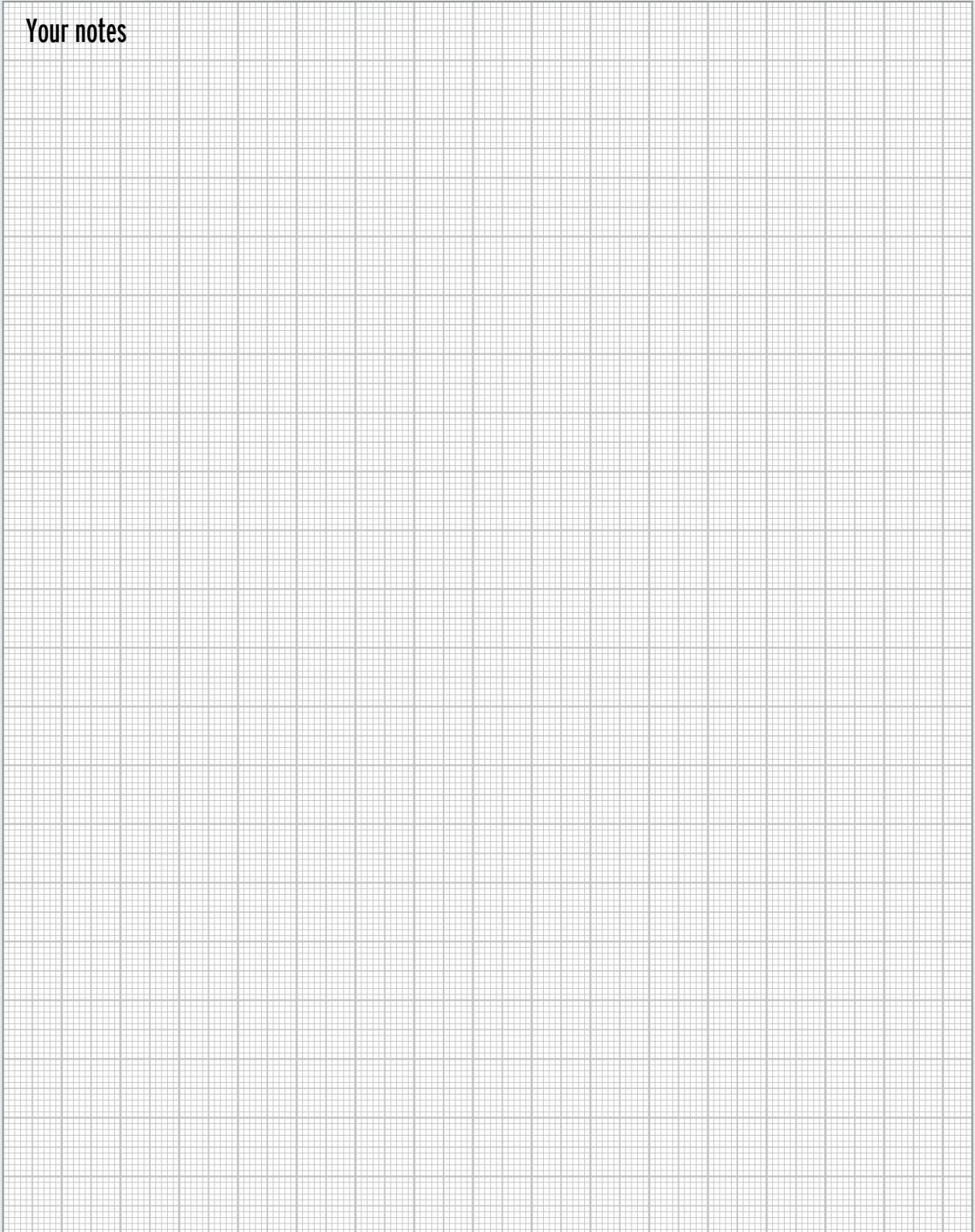


Male coupling

with weld-on ends according to ISO 1127

Order number	Size	Operating pressure [bar]	Material
KKAW 34 ST	DN 20–3/4"	16	ST
KKAW 34 SS		16	SS
KKAW 10 ST	DN 25–1"	16	ST
KKAW 10 SS		16	SS
KKAW 32 ST	DN 32–1 1/4"	16	ST
KKAW 32 SS		16	SS
KKAW 38 ST	DN 40–1 1/2"	16	ST
KKAW 38 SS		16	SS
KKAW 20 ST	DN 50–2"	16	ST
KKAW 20 SS		16	SS
KKAW 65 ST	DN 65–2 1/2"	16	ST
KKAW 65 SS		16	SS
KKAW 30 ST	DN 80–3"	16	ST
KKAW 30 SS		16	SS
KKAW 40 ST	DN 100–4"	16	ST
KKAW 40 SS		16	SS

Your notes



Lever arm couplings according to EN 14420-7 with lever arm lock

A coupling with an additional lock for the lever arms is a further development of the normal lever arm coupling. Different versions are known on the market, but Autolok® and Saflok™ are probably the most common ones internationally due to their functions integrated in the lever.

The lever arms cannot open by themselves. You must also pull at two rings fastened at the lever arms in order to allow for opening of the fitting. In this way, a lock between fitting body and lever is released by means of spring technology.

As male parts, the standard fittings are used so that in case of conversion in order to reach a higher safety standard, only the female parts need to be exchanged.

Apart from that, we offer the PTFE-lined variant, see page 74.

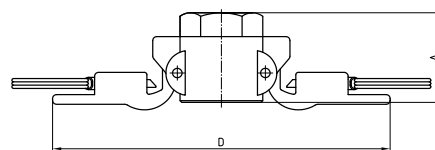
According to EN 14420-7 up to PN 16

System seals: CSM
Thread seals: PTFE

Thread: G = ISO 228-1, R = ISO 7-1

Lever arm coupling

Female part with internal thread and lever arm lock



Article	Nominal width	A	D
KKSD34	20–3/4"	46.5	110
KKSD10	25–1"	54	125
KKSD32	32–1 1/4"	61	180
KKSD38	38–1 1/2"	67	190
KKSD20	50–2"	75	200
KKSD65	65–2 1/2"	77.5	210
KKSD30	80–3"	83	250
KKSD40	100–4"	85.5	290



Female coupling with ISO 228-1 internal thread and lever arm lock

Order number	Size	Thread	Operating pressure [bar]	Material
KKSD 34 SS	DN 20–3/4"	G 3/4	16	SS
KKSD 10 SS	DN 25–1"	G 1	16	SS
KKSD 32 SS	DN 32–1 1/4"	G 1 1/4	16	SS
KKSD 38 SS	DN 40–1 1/2"	G 1 1/2	16	SS
KKSD 20 SS	DN 50–2"	G 2	16	SS
KKSD 65 SS	DN 65–2 1/2"	G 2 1/2	16	SS
KKSD 30 SS	DN 80–3"	G 3	16	SS
KKSD 40 SS	DN 100–4"	G 4	16	SS



Female coupling with hose fitting according to DIN EN 14420-2 and lever arm lock

Order number	Size	DN [mm]	Operating pressure [bar]	Material
KKSCS 34 SS	DN 20–3/4"	19	16	SS
KKSCS 10 SS	DN 25–1"	25	16	SS
KKSCS 32 SS	DN 32–1 1/4"	32	16	SS
KKSCS 38 SS	DN 40–1 1/2"	38	16	SS
KKSCS 20 SS	DN 50–2"	50	16	SS
KKSCS 65 SS	DN 65–2 1/2"	63	16	SS
KKSCS 30 SS	DN 80–3"	75	16	SS
KKSCS 40 SS	DN 100–4"	100	16	SS



Female coupling with ISO 7-1 external thread and lever arm lock

Order number	Size	Thread	Operating pressure [bar]	Material
KKSB 34 SS	DN 20–3/4"	R 3/4	16	SS
KKSB 10 SS	DN 25–1"	R 1	16	SS
KKSB 32 SS	DN 32–1 1/4"	R 1 1/4	16	SS
KKSB 38 SS	DN 40–1 1/2"	R 1 1/2	16	SS
KKSB 20 SS	DN 50–2"	R 2	16	SS
KKSB 65 SS	DN 65–2 1/2"	R 2 1/2	16	SS
KKSB 30 SS	DN 80–3"	R 3	16	SS
KKSB 40 SS	DN 100–4"	R 4	16	SS



Caps with lever arm lock

Order number	Size	Operating pressure [bar]	Material
KKSDC 34 SS	DN 20–3/4"	16	SS
KKSDC 10 SS	DN 25–1"	16	SS
KKSDC 32 SS	DN 32–1 1/4"	16	SS
KKSDC 38 SS	DN 40–1 1/2"	16	SS
KKSDC 20 SS	DN 50–2"	16	SS
KKSDC 65 SS	DN 65–2 1/2"	16	SS
KKSDC 30 SS	DN 80–3"	16	SS
KKSDC 40 SS	DN 100–4"	16	SS

System seals

System seals
for tank truck couplings according to EN
14420-6

and

System seals for lever arm couplings
according to EN 14420-7



System form seal

for female coupling DN 50/DN 80

Order number	Material	Size
HY 50 GSD	CSM	DN 50 61.5 x 49 mm
TW 50 GSD	NBR	
VD 50 GSD	PUR	
VI 50 GSD	FKM	
HY 80 GSD	CSM	DN 80 92 x 77 mm
TW 80 GSD	NBR	
VD 80 GSD	PUR	
VI 80 GSD	FKM	



System O-ring seal

for female coupling DN 100

Order number	Material	Size
TW 100 HY	CSM	DN 100 114 x 99 x 7 mm
TW 100 VI	FKM	
TW 100	NBR	



System flat seal

for female coupling DN 50/DN 80

Order number	Material	Size
HY 50	CSM	DN 50 61.5 x 49 x 5 mm
TW 50	NBR	
VD 50	PUR	
VI 50	FKM	
TD 50	PTFE	
TW 50 TEVID	PTFE/FKM	
HY 80	CSM	DN 80 92 x 77 x 6 mm
TW 80	NBR	
VD 80	PUR	
VI 80	FKM	
TD 80	PTFE	
TW 80 TEVID	PTFE/FKM	

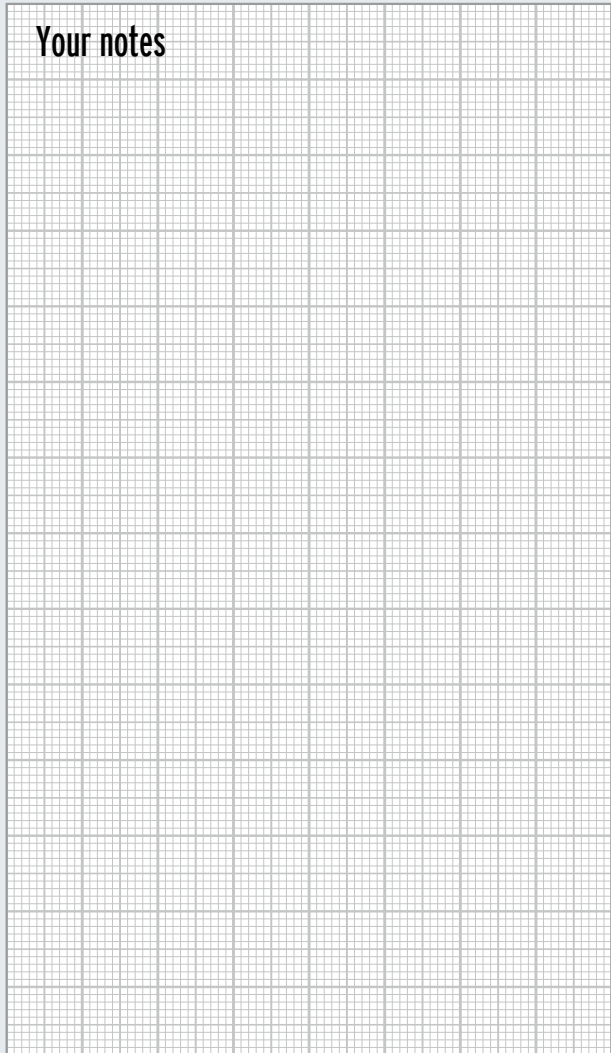


System flat seal
for female arm coupling

Order number	Material	Size
KKD 12 PE KKD 12 VI KKD 12 HY KKD 12 TEEP KKD 12 TEVI KKD 12 TFESI	NBR FKM CSM PTFE/EPDM PTFE/FKM PTFE/silicone	1/2"
KKD 34 PE KKD 34 VI KKD 34 HY KKD 34 TEEP KKD 34 TEVI KKD 34 TFESI	NBR FKM CSM PTFE/EPDM PTFE/FKM PTFE/silicone	3/4"
KKD 10 PE KKD 10 VI KKD10 HY KKD 10 TEEP KKD 10 TEVI KKD 10 TFESI	NBR FKM CSM PTFE/EPDM PTFE/FKM PTFE/silicone	1"
KKD 32 PE KKD 32 VI KKD 32 HY KKD 32 TEEP KKD 32 TEVI KKD 32 TFESI	NBR FKM CSM PTFE/EPDM PTFE/FKM PTFE/silicone	1 1/4"
KKD 38 PE KKD 38 VI KKD 38 HY KKD 38 TEEP KKD 38 TEVI KKD 38 TFESI	NBR FKM CSM PTFE/EPDM PTFE/FKM PTFE/silicone	1 1/2"
KKD 20 PE KKD 20 VI KKD 20 HY KKD 20 TEEP KKD 20 TEVI KKD 20 TFESI	NBR FKM CSM PTFE/EPDM PTFE/FKM PTFE/silicone	2"
KKD 65 PE KKD 65 VI KKD 65 HY KKD 65 TEED KKD 65 TEVI KKD 65 TFESI	NBR FKM CSM PTFE/EPDM PTFE/FKM PTFE/silicone	2 1/2"

Order number	Material	Size
KKD 30 PE KKD 30 VI KKD 30 HY KKD 30 TEEP KKD 30 TEVI KKD 30 TFESI	NBR FKM CSM PTFE/EPDM PTFE/FKM PTFE/silicone	3"
KKD 40 PE KKD 40 VI KKD 40 HY KKD 40 TEEP KKD 40 TEVI KKD 40 TFESI	NBR FKM CSM PTFE/EPDM PTFE/FKM PTFE/silicone	4"

Your notes

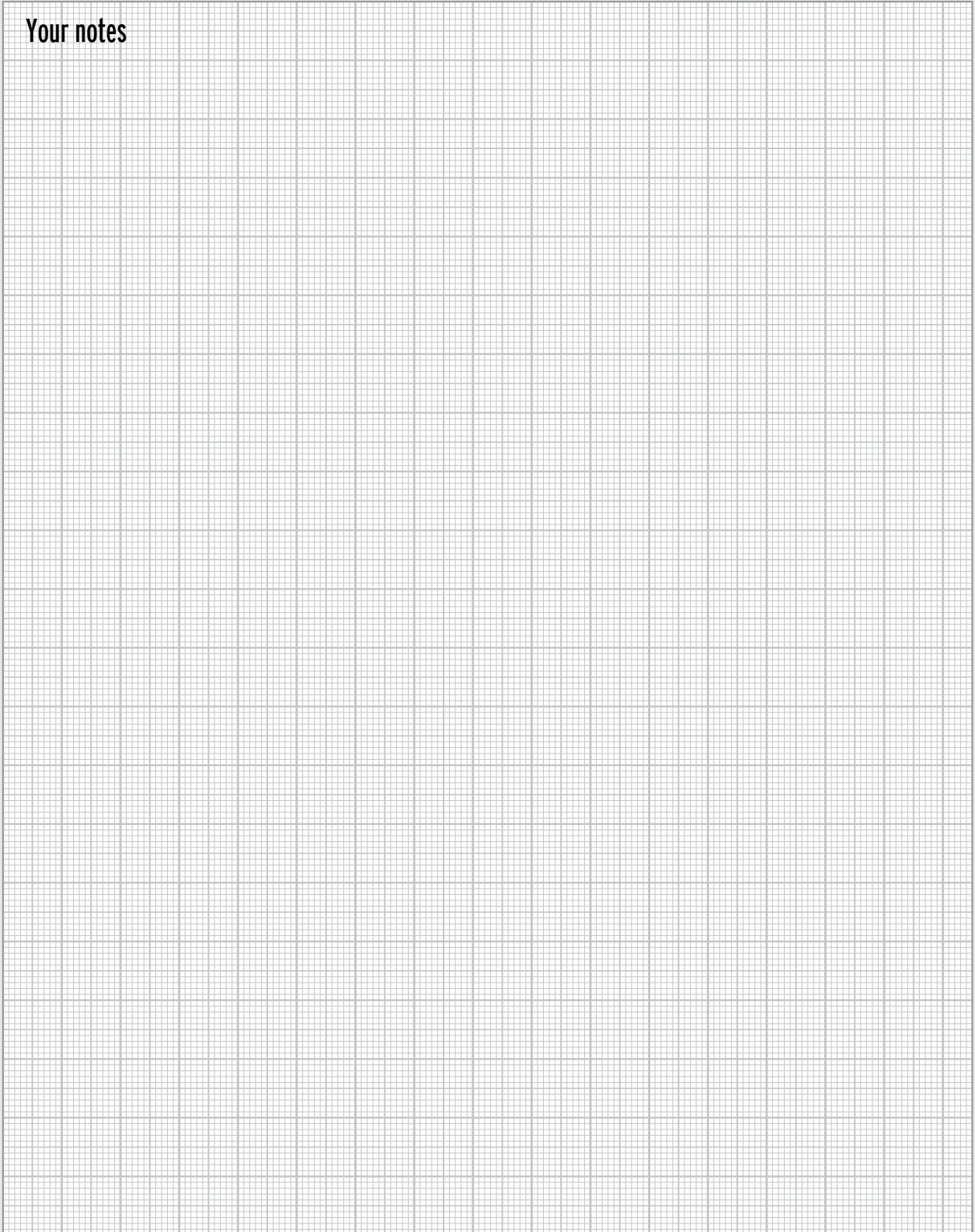
			
--	--	--	--

Thread seals according to EN 14420-6 and EN 14420-7

Order number	Size	Material	Dimension		
			D	d	s
			IT 13 V 13 VI 13 TE 13	G 1/2	IT NBR FKM PTFE
IT 18 V 18 VI 18 TE 18	G 3/4	IT NBR FKM PTFE	26	19	2
IT 23 V 23 VI 23 TE 23	G 1	IT NBR FKM PTFE	33	24	2
IT 32 V 32 VI 32 TE 32	G 1 1/4	IT NBR FKM PTFE	42	33	2
IT 38 V 38 VI 38 TE 38	G 1 1/2	IT NBR FKM PTFE	48	39	2
IT 49 V 49 VI 49 TE 49 EP 49	G 2	IT NBR FKM PTFE EPDM	60	49	2
V 63 VI 63 TE 63	G 2 1/2	NBR FKM PTFE	76	63	2
V 77 VI 77 TE 77 EP 77	G 3	NBR FKM PTFE EPDM	88	77	3
V 100 VI 100 TE 100 EP 100	G 4	NBR FKM PTFE EPDM	114	100	3
V 102 VI 102 TE 102	5 1/2" DIN 11	NBR FKM PTFE	140	102	3

Order number	Size	Material	Dimension		
			D	d	s
			MI 13 MI 13 VI MI 13 PTFE	Rd. 34x1/8"	NBR FKM PTFE
MI 20 MI 20 VI MI 20 PTFE	Rd. 44x1/6"	NBR FKM PTFE	33	23	4.5
MI 25 MI 25 VI MI 25 PTFE	Rd. 52x1/6"	NBR FKM PTFE	40	30	5
MI 32 MI 32 VI MI 32 PTFE	Rd. 58x1/6"	NBR FKM PTFE	46	36	5
MI 40 MI 40 VI MI 40 PTFE	Rd. 65x1/6"	NBR FKM PTFE	52	42	5
MI 50 MI 50 VI MI 50 PTFE	Rd. 78x1/6"	NBR FKM PTFE	64	54	5
MI 65 MI 65 VI MI 65 PTFE	Rd. 95x1/6"	NBR FKM PTFE	81	88	5
MI 75 MI 75 VI MI 75 PTFE	Rd. 110x1/4"	NBR FKM PTFE	95	88	5
MI 100 MI 100 VI MI 100 PTFE	Rd. 130x1/4"	NBR FKM PTFE	114	104	6

Your notes



Hydrant couplings "Storz" system

Due to their easy and fast assembly, hydrant couplings, usually referred to as Storz couplings, are mainly used by fire brigades. They are symmetric couplings in which the connection fittings to be coupled are identical on the coupling side and can thus be connected in any form.

The opposite claws, referred to as cleats, are engaged by means of rotation.

When selecting size A, B, C or D, the cleat distance must be observed.

In case of seals of NBR rubber, oil- and petrol-resistant
In case of stainless steel couplings of FKM

Thread: G = ISO 228-1

Materials: SS = stainless steel 1.4571/1.4408,
MS = brass, AL = aluminium alloy

Other materials upon request



Suction couplings
with long hose fitting

Order number	Coupling size STORZ	DN hose fitting Ø [mm]	Inner cleat distance	Material
2 D 19 AL	D	19	31	AL
2 D 19 MS	D	19	31	MS
2 DAL	D	25	31	AL
2 DMS	D	25	31	MS
2 DSS	D	25	31	SS
2 C 25 AL	C	25	66	AL
2 C 25 MS	C	25	66	MS
2 C 32 AL	C	32	66	AL
2 C 32 MS	C	32	66	MS
2 C 38 AL	C	38	66	AL
2 C 38 MS	C	38	66	MS
2 C 38 SS	C	38	66	SS
2 C 45 AL	C	45	66	AL
2 C 45 MS	C	45	66	MS
2 CAL	C	52	66	AL
2 CMS	C	52	66	MS
2 CSS	C	52	66	SS
2 C 60 AL	C	60	66	AL
2 B 65 AL	B	65	89	AL
2 B 65 MS	B	65	89	MS
2 B 65 SS	B	65	89	SS
2 BAL	B	75	89	AL
2 BMS	B	75	89	MS
2 B 75 SS	B	75	89	SS
2 B 80 AL	B	80	89	AL
2 A 100 AL	A	100	133	AL
2 A 100 MS	A	100	133	MS
2 A 100 SS	A	100	133	SS
2 AAL	A	110	133	AL
2 AMS	A	110	133	MS
2 ASS	A	110	133	SS
2125 AL	125	125	148	AL
2135 AL	135	135	159	AL
2150 AL	150	150	160 (3 cleats)	AL
2165 AL	165	150	188	AL



Fixed couplings with internal thread

Order number	Coupling-size STORZ	Thread	Inner cleat distance	Material
3 D 12 AL	D	G 1/2	31	AL
3 D 12 MS	D	G 1/2	31	MS
3 D 34 AL	D	G 3/4	31	AL
3 D 34 MS	D	G 3/4	31	MS
3 D AL	D	G 1	31	AL
3 DMS	D	G 1	31	MS
3 DSS	D	G 1	31	SS
3 C 10 AL	C	G 1	66	AL
3 C 10 MS	C	G 1	66	MS
3 C 114 AL	C	G 1 1/4	66	AL
3 C 114 MS	C	G 1 1/4	66	MS
3 C 114 SS	C	G 1 1/4	66	SS
3 C 112 AL	C	G 1 1/2	66	AL
3 C 112 MS	C	G 1 1/2	66	MS
3 C 112 SS	C	G 1 1/2	66	SS
3 CAL	C	G 2	66	AL
3 CMS	C	G 2	66	MS
3 CSS	C	G 2	66	SS
3 C 212 AL	C	G 2 1/2	66	AL
3 C 212 MS	C	G 2 1/2	66	MS
3 B 2 AL	B	G 2	89	AL
3 B 2 MS	B	G 2	89	MS
3 BAL	B	G 2 1/2	89	AL
3 BMS	B	G 2 1/2	89	MS
3 BSS	B	G 2 1/2	89	SS
3 B 3 AL	B	G 3	89	AL
3 B 3 MS	B	G 3	89	MS
3 B 3 SS	B	G 3	89	SS
3 A 4 AL	A	G 4	133	AL
3 A 4 MS	A	G 4	133	MS
3 A 4 SS	A	G 4	133	SS
3 AAL	A	G 4 1/2	133	SL
3 AMS	A	G 4 1/2	133	MS
3 ASS	A	G 4 1/2	133	SS
3125 AL	125	G 5	148	AL
3125 MS	125	G 5	148	MS
3135 AL	135	G 5	159	AL
3150 AL	150	G 6	160 (3 cleats)	AL
3165 AL	165	G 6	188	AL



Fixed couplings with external thread

Order number	Coupling-size STORZ	Thread	Inner cleat distance	Material
4 D 1 AL	D	G 1	31	AL
4 D 1 MS	D	G 1	31	MS
4 C 114 AL	C	G 1 1/4	66	AL
4 C 114 MS	C	G 1 1/4	66	MS
4 C 112 AL	C	G 1 1/2	66	AL
4 C 112 MS	C	G 1 1/2	66	MS
4 CAL	C	G 2	66	AL
4 C 2 MS	C	G 2	66	MS
4 C 2 SS	C	G 2	66	SS
4 B 212 AL	B	G 2 1/2	89	AL
4 B 212 MS	B	G 2 1/2	89	MS
4 B 212 SS	B	G 2 1/2	89	SS
4 B 3 AL	B	G 3	89	AL
4 B 3 MS	B	G 3	89	MS
4 B 3 SS	B	G 3	89	SS



Blind couplings with chain

Order number	Coupling-size STORZ	Inner cleat distance	Material
8 DAL	D	31	AL
8 DMS	D	31	MS
8 DSS	D	31	SS
8 CAL	C	66	AL
8 CMS	C	66	MS
8 CSS	C	66	SS
8 BAL	B	89	AL
8 BMS	B	89	MS
8 BSS	B	89	SS
8 AAL	A	133	AL
8 AMS	A	133	MS
8 ASS	A	133	SS

Hydrant couplings "Storz" system

In case of seals of NBR rubber,
oil- and petrol-resistant
In case of stainless steel couplings of FKM

Thread: G = ISO 228-1

Materials: SS = stainless steel 1.4571/1.4408,
MS = brass, AL = aluminium alloy

Materials:
For the abbreviation, see Materials register

Other materials upon request



Couplings rotatable
with external thread

Order number	Coupling-size STORZ	Thread	Inner cleat distance	Material
4 CALDR	C	G 2 A	66	AL
4 B 212 ALDR	B	G 2 1/2 A	89	AL
4 B 3 ALDR	B	G 2 A	89	AL
4 A 3 ALDR	A	G 3 A	133	AL
4 A 4 ALDR	A	G 4 A	133	AL



Couplings rotatable
with internal thread

Order number	Coupling-size STORZ	Thread	Inner cleat distance	Material
3 C 112 ALDR	C	G 2 1/2	66	AL
3 C ALDR	C	G 2	66	AL
3 B ALDR	B	G 2 1/2	89	AL
3 B 3 ALDR	B	G 3	89	AL
3 A 4 ALDR	A	G 4	133	AL



Transition pieces

Order number	Coupling size STORZ	Internal cleat distance	Material
7 CDAL	C–D	66/31	AL
7 CDMS	C–D	66/31	MS
7 CDSS	C–D	66/31	SS
7 BCAL	B–C	89/66	AL
7 BCMS	B–C	89 /66	MS
7 BCSS	B–C	89/66	SS
7 ABAL	A–B	133/89	AL
7 ABMS	A–B	133/89	MS
7 ABSS	A–B	133/89	SS



Couplings with hose fitting and safety collar

Order number	Size	DN	Material
SKSD 25 SS SKSD 25 SS MS SKSD 25 MS SKSC 25 AL	D	25	SS SS/MS MS AL
SKSC 38 SS SKSC 38 SS MS SKSC 38 MS SKSC 38 AL	C	38	SS SS/MS MS AL
SKSC 40 SS SKSC 40 SS MS SKSC 40 MS SKSC 40 AL	C	40	SS SS/MS MS AL
SKSC 50 SS SKSC 50 SS MS SKSC 50 MS SKSC 50 AL	C	50	SS SS/MS MS AL
SKSC 65 MS SKSC 65 AL	B	65	MS AL
SKSB 75 SS SKSB 75 SS MS SKSB 75 MS SKSB 75 AL	B	75	SS SS/MS MS AL
SKSA 100 SS SKSA 100 SS MS SKSA 100 MS SKSA 100 AL	A	100	SS SS/MS MS AL



Coupling with fixed flange

Order number	Coupling-size STORZ	Flange size	Inner cleat distance	Material
9 C 50 AL	C	DN 50 PN 16	66	AL
9 B 65 AL 9 B 80 AL	B	DN 65 PN 16 DN 80 PN 16	89	AL
9 A 100 AL	A	DN 100 PN 16	133	AL



Suction and pressure seals for Storz couplings

Order number	for coupling size	Material
SDP SDV	D D	NBR FKM
SCP SCV	C C	NBR FKM
SBP SBV	B B	NBR FKM
SAP SAV	A A	NBR FKM

NBR seals, in case of stainless steel or FKM

Other materials upon request



Quick-acting couplings

The lock nipple and the locking coupling lock on both sides; the plug nipple and the locking coupling, on the other hand, lock on one side.

The quick-acting couplings block the flow in the uncoupled condition and open in the coupled condition. Thus, the hose can be uncoupled under pressure. The couplings can also be designed without lock.

Versions from DN 12 to DN 50 as through-type coupling, plug nipple, locking coupling and lock nipple with internal thread, external thread, hose fitting with grooves, with or without safety lock or with or without bleeding valves.

Materials: Stainless steel 1.4571/1.4404, Brass, nickel-plated

Materials:
For the abbreviation, see Materials register

Seals: NBR, FKM, EPDM

Other materials upon request



Lock nipples
with internal thread

Order number	Nominal size	Thread	Seal	Material
VSN1219I	12	3/4" NPT	FKM	MS
VSN1219ISS	12	3/4" NPT	FKM	SS
VSN1210I	12	1" NPT	FKM	MS
VSN1210ISS	12	1" NPT	FKM	SS
VSN1910I	19	1" NPT	FKM	MS
VSN1910ISS	19	1" NPT	FKM	SS



Lock nipples
with external thread

Order number	Nominal size	Thread	Seal	Material
VSN1219A	12	3/4" NPT	FKM	MS
VSN1219ASS	12	3/4" NPT	FKM	SS
VSN1210A	12	1" NPT	FKM	MS
VSN1210ASS	12	1" NPT	FKM	SS
VSN1910A	19	1" NPT	FKM	MS
VSN1910ASS	19	1" NPT	FKM	SS



Locking couplings
with internal thread

Order number	Nominal size	Thread	Seal	Material
VSK1219I	12	3/4" NPT	FKM	MS
VSK1210I	12	1" NPT	FKM	MS
VSK1910I	19	1" NPT	FKM	MS



Locking couplings
with external thread

Order number	Nominal size	Thread	Seal	Material
VSK1219A	12	3/4" NPT	FKM	MS
VSK1210A	12	1" NPT	FKM	MS



Lock nipples
with hose fitting

Order number	Nominal size	DN	Seal	Material
VSN1219S	12	19	FKM	MS
VSN1219SSS	12	19	FKM	SS
VSN1210S	12	25	FKM	MS



Cap for lock nipples

Order number	Nominal width	Seal	Material
VSNK12S	12	FKM	MS



Locking couplings
with hose fitting

Order number	Nominal size	DN	Seal	Material
VSK1219S	12	19	FKM	MS



Plug for locking couplings

Order number	Nominal width	Seal	Material
VSKS12S	12	FKM	MS

Your notes

Your notes	
------------	--

Compressed-air jaw couplings

The compressed-air jaw coupling according to DIN 3489 is designed for compressed air up to an operating pressure of 10 bar. The quick coupling with two jaws each can be locked with the two identical coupling heads by rotating them under pressure by 45 degrees. This coupling system with a jaw distance of 42 mm is used worldwide at construction sites and in the industry for the compressed-air supply.

By default, the couplings are used as right-closing fittings; for media separation, they are, however, also available as left-closing variant.

With safety double cam, jaw distance 42 mm according to DIN 3489

Thread: G = ISO 228-1

Couplings with MS seals not according to DIN 3489

Materials:
For the abbreviation, see Materials register

Other materials upon request



Blind couplings

Order number	Thread	Seal	Material
VKO		NBR	TG
VKM		MS	TG
VKO SS		NBR	SS



Couplings with internal thread

Order number	Thread	Seal	Material
KIG 14	1/4"	NBR	TG
KIG 38	3/8"	NBR	TG
KIG 12	1/2"	NBR	TG
KIG 12 SS	1/2"	NBR	SS
KIG 34	3/4"	NBR	TG
KIG 34 SS	3/4"	NBR	SS
KIG 10	1"	NBR	TG
KIG 10 SS	1"	NBR	SS
KIM 12	1/2 "	MS	TG
KIM 34	1/2 "	MS	TG
KIM 10	1"	MS	TG



Couplings with external thread

Order number	Thread	Seal	Material
KAG 14	1/4"	NBR	TG
KAG 38	3/4"	NBR	TG
KAG 12	1/2"	NBR	TG
KAG 12 SS	1/2"	NBR	SS
KAG 34	3/4"	NBR	TG
KAG 34 SS	3/4"	NBR	SS
KAG 10	1"	NBR	TG
KAG 10 SS	1"	NBR	SS
KAM 12	1/2"	MS	TG
KAM 34	3/4"	MS	TG
KAM 10	1"	MS	TG

Compressed-air jaw couplings "MODY"

The "MODY" compressed-air jaw coupling according to DIN 3238 is a further development of the compressed-air jaw coupling according to DIN 3489.

It is based on the same coupling head construction. The system distinguishes itself by the very easy coupling in combination with the locking and connection by means of the lock nut.

This prevents the unintended opening and makes the coupling system a high-quality safety coupling for compressed air with an operation pressure of up to 16 bar. One big advantage is that the fittings according to DIN 3238 and DIN 3489 are compatible.

With safety double cam, jaw distance 42 mm according to DIN 3489

Materials: TG = malleable cast iron, SS = stainless steel 1.4408

Couplings with MS seals not according to DIN 3489

Other materials upon request



Hose clamps
DIN 20039 B with safety jaw

Order number	External hose Ø [mm]	Material
SK 34	28–32	TG
SK 39	35–42	TG
SK 44	42–45	TG
SK 51	45–53	TG
SK 60	55–60	TG
SK 73	60–73	TG



Couplings
with hose fitting

Order number	DN	Seal	Material
SKG 10	10	NBR	TG
SKG 13	13	NBR	TG
SKG 13 SS	13	CSM	SS
SKG 15	15	NBR	TG
SKG 19	19	NBR	TG
SKG 19 SS	19	CSM	SS
SKG 25	25	NBR	TG
SKG 25 SS	25	CSM	SS
SKM 13	13	MS	TG
SKM 15	15	MS	TG
SKM 19	19	MS	TG
SKM 25	25	MS	TG



Hose clamps
DIN 20039 A

Order number	External hose Ø [mm]	Material
SL 29	22–29	TG
SL 34	28–34	TG
SL 40	32–40	TG
SL 49	39–49	TG
SL 60	48–60	TG
SL 76	60–76	TG
SL 94	77–94	TG



Couplings
with hose fitting and safety collar

Order number	DN	Seal	Material
SKB 13	13	NBR	TG
SKB 19	19	NBR	TG
SKB 25	25	NBR	TG

KAMVALOK® dry couplings

The Kamvalok® dry coupling is the safe, clean and environmentally friendly way to transport your dangerous media.

The Kamvalok® dry couplings are considered to be the industry standard. They are used at liquid transfer points at which product losses are to be avoided. Apart from that, they are a reliable solution in order to prevent liquid leaks in the establishment or separation of the hose connection.

Safe

The locking lever engages in order to prevent any unintended opening or closing of the valve.

The Autolok™ safety lever arms offer additional protection by means of an automatic locking mechanism that engages noticeably.

Clean

The sealing cylinder with conical seat and nose seal that can be snapped on allows for an automatic closing from both directions – from both the coupling and from the adapter, in order to prevent unintended liquid leakage. The nose seal can be easily replaced without a new sealing cylinder being necessary.

Environmentally friendly

Thanks to the leakage protection, the risks arising during the connection and/or separation during the transport of dangerous media are reduced.

The dangerous liquids and vapours within the line are kept away from the environment.

Technical parameters

Maximum design pressure:

Size 3/4"	15 bar
Size 1 1/2"	15 bar
Size 2"	10.5 bar
Size 3"	8.5 bar

Connection thread: ISO 7-1, BS 21 (conical)

Materials: Stainless steel 1.4408 and aluminium

Seals: NBR, FKM, EPDM, PTFE and FFKM

Handling

The coupling levers are stuck together and both levers are pushed down simultaneously; while you do so, the flow is released or stopped via the hand lever.





Kamvalok® dry couplings, female part

Order number	Nominal width DN	Internal thread ISO 7-1, BS 21	Material
1712 DB	40	R 1 1/2	Seals: FKM Housing: Aluminium Inner part: Brass, aluminium, stainless steel
	50	R 2	
	80	R 3	
1762 DB	20	R 3/4	Seals: FKM Housing: Aluminium Inner part: Stainless steel, aluminium
	40	R 1 1/2	
	50	R 2	
	80	R 3	
1764 DB	40	R 1 1/2	Seals: EPDM Housing: Aluminium Inner part: Stainless steel, aluminium
	50	R 2	
	80	R 3	
1765 DB	40	R 1 1/2	Seals: PTFE/FKM Housing: Aluminium Inner part: Stainless steel, aluminium
	50	R 2	
	80	R 3	
1771 DB	40	R 1 1/2	Seals: NBR Housing: Aluminium Inner part: Brass, aluminium, stainless steel
	50	R 2	
	80	R 3	
1772 DB	40	R 1 1/2	Seals: FKM Housing: Stainless steel Inner part: Stainless steel
	50	R 2	
	80	R 3	
1773 DB	40	R 1 1/2	Seals: PTFE/FKM Housing: Stainless steel Inner part: Stainless steel
	50	R 2	
	80	R 3	
1774 DB	40	R 1 1/2	Seals: EPDM Housing: Stainless steel Inner part: Stainless steel
	50	R 2	
	80	R 3	



Kamvalok® dry couplings, male part

Order number	Nominal width DN	Internal thread ISO 7-1	Material
1611 AB	40	R 1 1/2	Seals: NBR Housing: Aluminium Inner part: Steel, brass, aluminium
	50	R 2	
	80	R 3	
1612 AB	20	R 3/4	Seals: FKM Housing: Aluminium Inner part: Stainless steel, aluminium
	40	R 1 1/2	
	50	R 2	
	80	R 3	
1613 AB	40	R 1 1/2	Seals: PTFE Housing: Aluminium Inner part: Stainless steel, aluminium
	50	R 2	
	80	R 3	
1614 AB	40	R 1 1/2	Seals: EPDM Housing: Aluminium Inner part: Stainless steel, aluminium
	50	R 2	
	80	R 3	
1672 AB	40	R 1 1/2	Seals: FKM Housing: Stainless steel Inner part: Stainless steel
	50	R 2	
	80	R 3	
1673 AB	40	R 1 1/2	Seals: PTFE Housing: Stainless steel Inner part: Stainless steel
	50	R 2	
	80	R 3	
1674 AB	40	R 1 1/2	Seals: EPDM Housing: Stainless steel Inner part: Stainless steel
	50	R 2	
	80	R 3	

Breakaway dry couplings

Suitable for 25 bar (PN 25), in case of aluminium for 10 bar (PN 10) operating pressure Type approval: TÜ-AGG 2114-94.

NBR impact rings (PR)
Seal kits (DS) made of polyurethane/NBR, in case of stainless steel of PTFE/FEP/FKM/EPDM/FFKM

Thread: G = ISO 228-1

Materials: Stainless steel 1.4571/1.4401, brass, aluminium alloy

Other versions and materials upon request.



Breakaway dry couplings

identical internal thread on both sides

Order number	Size/ connection	Thread	Material
ABV 40 ABV 40 MS	DN 40	G 1 1/2	SS MS
ABV 50 ABV 50 MS	DN 50	G 2	SS MS
ABV 65 ABV 65 MS	DN 65	G 2 1/2	SS MS
ABV 80 ABV 80 MS ABV 80 AL	DN 80	G 3	SS MS AL
ABV 100 ABV 100 MS ABV 100 AL	DN 100	G 4	SS MS AL



Seal kits

Order number	Size/ connection	Material
DS 40 VUPE DS 40 TEVI DS 40 TEFEP	DN 40	CSM/NBR PTFE/FKM PTFE/FEP
DS 50 VUPE DS 50 TEVI DS 50 TEFEP	DN 50	CSM/NBR PTFE/FKM PTFE/FEP
DS 65 VUPE DS 65 TEVI DS 65 TEFEP	DN 65	CSM/NBR PTFE/FKM PTFE/FEP
DS 80 VUPE DS 80 TEVI DS 80 TEFEP	DN 80	CSM/NBR PTFE/FKM PTFE/FEP



Impact rings

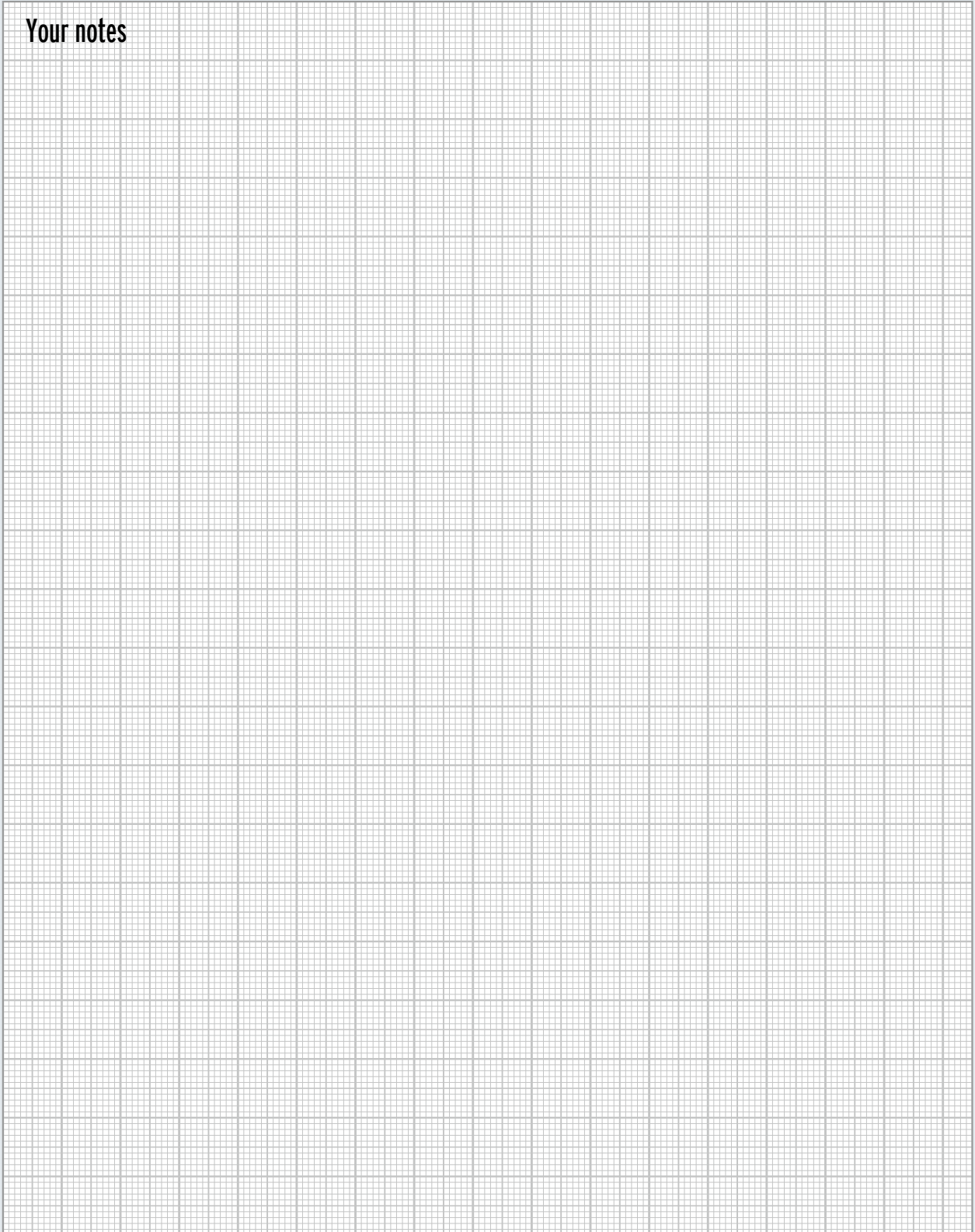
Order number	Size/ connection	AD/ID/B	Material
PR 40	DN 40	116 x 66 x 20	NBR
PR 50	DN 50	113 x 83 x 20	NBR
PR 65	DN 65	148 x 98 x 20	NBR
PR 80	DN 80	169 x 125 x 20	NBR



Breaking pin

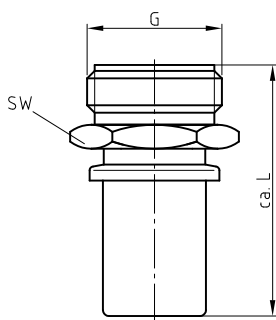
Order number	Size/ connection	Thread	Material
BB 40	DN 40	M 6 x 25	SS
BB 50	DN 50	M 6 x 25	SS
BB 65	DN 65	M 6 x 25	SS
BB 80	DN 80	M 6 x 25	SS
BB 100	DN 100	M 6 x 25	SS

Your notes



Male hose tail with safety clamps

Male hose tail with safety clamps VS dimensions



Article	Size	Thread (G)	approx. L	SW
VS13512	DN 13	R1/2	65	SW22
VS19634	DN 19	R3/4	62	SW27
VS25610	DN 25	G1	63	SW36
VS32654	DN 32	G1 1/4	65	SW46
VS38632	DN 38	G1 1/2	69.5	SW55
VS50720	DN 50	G2	78.5	SW60
VS65752	DN 65	G2 1/2	95.5	SW85
VS75730	DN 75	G3	103	SW95
VS100840	DN 100	G4	131	SW125

According to EN 14420-5 with external thread, suitable for 25 bar operating pressure (PN 25), polypropylene 10 bar (PN 10)

Apart from that, we offer the PTFE-lined variant, see page 74.

External thread on the one side, hose fitting with safety collar on the other

DN: Internal hose diameter in mm

Thread: G = DIN ISO 228-1, R = ISO 7-1,
NPT = National Pipe Thread
according to ASME B1.20.1

Seal form:

fld. = flat-sealing

Gew. = sealing in the thread

Materials:

For the abbreviation, see Materials register

Other materials upon request

Fig. 1



Fig. 2

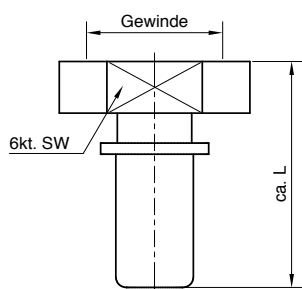


Order number	DN	Thread	Material	Seal form	Fig.
VS 13512STKO	13 (1/2")	R 1/2	ST	Gew.	1
VS 13512SSKO			SS	Gew.	1
VS 13512MSKO			MS	Gew.	1
VS 13512STNPT	13 (1/2")	1/2" NPT	ST	Gew.	1
VS 13512SSNPT			SS	Gew.	1
VS 13512MSNPT			MS	Gew.	1
VS 19634STKO	19 (3/4")	R 3/4	ST	Gew.	1
VS 19634SSKO			SS	Gew.	1
VS 19634MSKO			MS	Gew.	1
VS 19634STNPT	19 (3/4")	3/4" NPT	ST	Gew.	1
VS 19634SSNPT			SS	Gew.	1
VS 19634MSNPT			MS	Gew.	1
VS 19610SS	19 (3/4")	G 1	SS	fld.	1
VS 19610MS			MS	fld.	1
VS 25610MSKO	25 (1")	R 1	MS	Gew.	1
VS 25610ST	25 (1")	G 1	ST	fld.	1
VS 25610SS			SS	fld.	1
VS 25610MS			MS	fld.	1
VS 25654SS	25 (1")	G 1 1/4	SS	fld.	1
VS 25654MS			MS	fld.	1
VS 25632SS	25 (1")	G 1 1/2	SS	fld.	1
VS 25632MS			MS	fld.	1
VS 25610STNPT	25 (1")	1" NPT	ST	Gew.	1
VS 25610SSNPT			SS	Gew.	1
VS 25610MSNPT			MS	Gew.	1
VS 25620SS	25 (1")	G 2	SS	fld.	1
VS 25620MS			MS	fld.	1
VS 32654MSKO	32 (1 1/4")	R 1 1/4	MS	Gew.	1
VS 32654ST	32 (1 1/4")	G 1 1/4	ST	fld.	1
VS 32654SS			SS	fld.	1
VS 32654MS			MS	fld.	1
VS 32632SS	32 (1 1/2")	G 1 1/2	SS	fld.	1
VS 32632MS			MS	fld.	1
VS 32620SS	32 (1 1/2")	G 2	SS	fld.	1
VS 32620MS			MS	fld.	1
VS 32654STNPT	32 (1 1/4")	1 1/4" NPT	ST	Gew.	1
VS 32654SSNPT			SS	Gew.	1
VS 32654MSNPT			MS	Gew.	1
VS 38632MSKO	38 (1 1/2")	R 1 1/2	MS	Gew.	2
VS 38632ST	38 (1 1/2")	G 1 1/2	ST	fld.	1
VS 38632SS			SS	fld.	1
VS 38632MS			MS	fld.	2

Order number	DN	Thread	Material	Seal form	Fig.
VS 38620SS	38 (1 1/2")	G 2	SS	fld.	1
VS 38620MS			MS	fld.	1
VS 38632STNPT	38 (1 1/2")	1 1/2" NPT	ST	Gew.	1
VS 38632SSNPT			SS	Gew.	1
VS 38632MSNPT			MS	Gew.	1
VS 50720ST	50 (2")	G 2	ST	fld.	1
VS 50720SS			SS	fld.	1
VS 50720MS			MS	fld.	1
VS 50720PP			PP	fld.	1
VS 5072MSKO	50 (2")	R 2	SS	Gew.	1
VS 50720STNPT	50 (2")	2" NPT	ST	Gew.	1
VS 50720SSNPT			SS	Gew.	1
VS 50720MSNPT			MS	Gew.	1
VS 50752SS	50 (2")	G 2 1/2	SS	fld.	1
VS 50752MS			MS	fld.	1
VS 65752SS	63 (2 1/2")	G 2 1/2	SS	fld.	1
VS 65752MS			MS	fld.	1
VS 65752MSKO	63 (2 1/2")	R 2 1/2	MS	Gew.	1
VS 65752SSNPT	63 (2 1/2")	2 1/2" NPT	SS	Gew.	1
VS 65752MSNPT			MS	Gew.	1
VS 65730SS	63 (2 1/2")	G 3	SS	fld.	2
VS 65730MS			MS	fld.	2
VS 75730ST	75 (3")	G 3	ST	fld.	2
VS 75730SS			SS	fld.	1
VS 75730SSNU	75 (3")	G 3	SS	fld.	2
VS 75730MS			MS	fld.	2
VS 75730PP			PP	fld.	1
VS 75730MSKO	75 (3")	R 3	MS	Gew.	2
VS 75730STNPT	75 (3")	3" NPT	ST	Gew.	2
VS 75730SSNPT			SS	Gew.	2
VS 75730MSNPT			MS	Gew.	2
VS 100840ST	100 (4")	G 4	ST	fld.	2
VS 100840SS			SS	fld.	2
VS 100840MS			MS	fld.	2
VS 100840MSKO	100 (4")	R 4	MS	Gew.	2
VS 100840STNPT	100 (4")	4" NPT	ST	Gew.	2
VS 100840SSNPT			SS	Gew.	2
VS 100840MSNPT			MS	Gew.	2

Female hose tail with safety clamps

MS socket with union nut



Article	Thread	approx. L	SW
MS13512	G1/2	58	SW24
MS19634	G3/4	58	SW30
MS25610	G1	60	SW36
MS32654	G1 1/4	61	SW46
MS38632	G1 1/2	67	SW55
MS50720	G2	78	SW65
MS65752	G2 1/2	93	SW85
MS75730	G3	100.5	SW100
MS100840	G4	136	-

Fig. 1



According to EN 14420-5 with union nut female hose tail with safety clamps suitable for 25 bar operating pressure (PN 25)

Apart from that, we offer the PTFE-lined variant, see page 74.

Swivel nut on the one side, hose fitting with safety collar on the other

DN: Internal hose diameter in mm

Thread: G = ISO 228-1, R = ISO 7-1,
NPT = National Pipe Thread
according to ASME B1.20.1

Seal form: fld. = flat-sealing
Gew. = sealing in the thread

Other materials upon request

Fig. 2



Fig. 3



Fig. 4






Female hose tail with safety clamps

Order number	DN	Thread	Material	Seal form
MS 13512ST	13 (1/2")	G 1/2	ST	fld.
MS 13512SS		G 1/2	SS	fld.
MS 13512MS		G 1/2	MS	fld.
MS 13512MSKO		R 1/2	MS	Gew.
MS 13512STNPT	13 (1/2")	1/2" NPT	ST	Gew.
MS 13534SS	13 (1/2")	G 3/4	SS	fld.
MS 13534MS			MS	fld.
MS 19634ST	19 (3/4")	G 3/4	ST	fld.
MS 19634SS		G 3/4	SS	fld.
MS 19634MS		G 3/4	MS	fld.
MS 19634MSKO		R 3/4	MS	Gew.
MS 19634STNPT	19 (3/4")	3/4" NPT	ST	Gew.
MS 19610SS	19 (3/4")	G 1	SS	fld.
MS 19610MS			MS	fld.
MS 25610ST	25 (1")	G 1	ST	fld.
MS 25610SS		G 1	SS	fld.
MS 25610MS		G 1	MS	fld.
MS 25610MSKO		R 1	MS	Gew.
MS 25610STNPT	25 (1")	1" NPT	ST	Gew.
		1" NPT	MS	fld.
MS 25654ST	25 (1")	G 1 1/4	ST	fld.
MS 25654SS			SS	fld.
MS 25654MS			MS	fld.
MS 25632SS	25 (1")	G 1 1/2	SS	fld.
MS 25632MS			MS	Gew.
MS 32654ST	32 (1 1/4")	G 1 1/4	ST	fld.
MS 32654SS		G 1 1/4	SS	fld.
MS 32654MS		G 1 1/4	MS	fld.
MS 32654MSKO		R 1 1/4	MS	Gew.
MS 32654STNPT	32 (1 1/4")	1 1/4" NPT	ST	Gew.
MS 32654MSNPT			MS	Gew.
MS 32632SS	32 (1 1/2")	G 1 1/2	SS	fld.
MS 32632MS			MS	fld.
MS 32620SS	32 (1 1/2")	G 2	SS	fld.
MS 32620MS			MS	fld.

Order number	DN	Thread	Material	Seal form	Fig.	Weight [= kg]
MS 38632ST	38 (1 1/2")	G 1 1/2	ST	fld.	1	0.30
MS 38632SS			SS	fld.	1	0.32
MS 38632MS			MS	fld.	2	0.25
MS 38632MSKO			MS	Gew.	2	0.28
MS 38632NPT	38 (1 1/2")	1 1/2" NPT	MS	Gew.	2	0.24
			MS	fld.	2	0.24
MS 38620SS	38 (1 1/2")	G 2	SS	fld.	1	0.42
MS 38620MS			MS	fld.	2	0.39
MS 50720ST	50 (2")	G 2	ST	fld.	1	0.58
MS 50720SS			SS	fld.	1	0.44
MS 50720MS			MS	fld.	2	0.45
MS 50720MSKO			MS	Gew.	2	0.47
MS 50720STNPT	50 (2")	2" NPT	ST	Gew.	1	0.56
			MS	fld.	2	0.45
MS 50752SS	50 (2")	G 2 1/2	SS	fld.	1	0.71
MS 50752MS			MS	fld.	2	0.66
MS 65752SS	63 (2 1/2")	G 2 1/2	SS	fld.	1	0.80
MS 65752MS			MS	fld.	2	0.80
MS 65752MSKO			MS	Gew.	2	0.85
MS 65752MS			MS	fld.	1	0.90
MS 65730MS	63 (2 1/2")	G 3	MS	fld.	2	1.15
MS 75730ST	75 (3")	G 3	ST	fld.	1	0.91
MS 75730SS			SS	fld.	1	0.96
MS 75730MS			MS	fld.	2	1.11
MS 75730MSKO			MS	Gew.	2	1.16
MS 75755SS	75 (3")	5 1/2" DIN 11	SS	fld.	3	4.61
MS 75755MS			MS	fld.	3	2.60
MS 75755AL			AL	fld.	4	1.96
MS 100840SS	100 (4")		SS	fld.	1	2.71
MS 100855ST	100 (4")	5 1/2" DIN 11	ST	fld.	3	5.01
MS 100855SS			SS	fld.	3	3.81
MS 100855MS			MS	fld.	3	4.41
MS 100855AL			AL	fld.	4	3.69

Universal quick-action fittings, type approval TÜV.A.323

TÜV Nord provided the  **marsoflex**® - universal quick-action fitting with the component marking TÜV.A.323. By default, the fittings are designed with a round thread according to DIN 405 or with a trapezoidal thread according to DIN 103.

Features:

- Double-acting sealing (metallic and by means of O-ring)
- High level of safety for the user and long service life
- Easy and comfortable handling due to little coupling force
- Quick fitting without the help of tools
- Extremely robust, durable, space-saving, compact construction
- Maintenance and user friendliness
- Use with steam and hot water up to an operating pressure of 18 bar and an operating temperature of 210 degrees; with cold water and compressed air an operating pressure of up to 40 bar is possible
- By default, medium-contacting connections are made of material 1.4404 and/or 1.4571. Other connections of 1.4301.
- Upon request, delivery with factory certifications according to EN 10204-3.1 possible

With conical nipple

Union nut or external thread
Rd. 44 x 1/6", suitable for 25 bar operating pressure (PN 25)

Female part universal quick-action fittings, on the one side swivel nut, on the other side hose fitting with safety collar

Male part universal quick-action fittings, on the one side external thread, on the other side hose fitting with safety collar

Conical seal form

DN: Internal hose diameter in mm

Thread: Rd. = Round thread according to DIN 405

Materials: ST, MS, SS = 1.4404/1.4408

Union nuts of 1.4301

Materials:
For the abbreviation, see Materials register

Other materials upon request



Conical welding stud with universal quick-action fittings

Order number	DN	Weld-on dimension	Material
AMRD44SS21.3x1.6	13	21.3x1.6	SS
AMRD44SS21.3x3.2	13	21.3x1.6	SS
AMRD44DN20SS	19	27x3.5	SS
AMRD44DN25SS	25	32.5x3.0	SS



Blind caps and plugs for universal quick-action fittings

Order number	Thread	on the one side	Material
BKRD44SS	Rd. 44 / 1/6"	-	SS
BKRD44SSIG14	Rd. 44 / 1/6"	G 1/4	SS
BKRD44SSKK34VT	Rd. 44 / 1/6"	-	SS
BKRD44SSR34KO	Rd. 44 / 1/6"	R 3/4"	SS
BSRD44SS	Rd. 44 / 1/6"	-	SS



Male part universal quick-action fittings

Order number	DN	Thread	Material
VS135RD44SS VS135RD44MS VS135RD44ST	13 (1/2")	Rd. 44x1/6"	SS MS ST
VS196RD44SS VS196RD44MS VS196RD44ST	19 (3/4")	Rd. 44x1/6"	SS MS ST
VS256RD44SS VS256RD44MS VS256RD44ST	25 (1")	Rd. 44x1/6"	SS MS ST
VS326RD44SS VS326RD44MS VS326RD44ST	32 (1 1/2")	Rd. 44x1/6"	SS MS ST



Female part universal quick-action fittings

Order number	DN	Thread	Material
MS135RD44SS MS135RD44MS MS135RD44ST	13 (1/2")	Rd. 44x1/6"	SS MS ST
MS196RD44SS MS196RD44MS MS196RD44ST	19 (3/4")	Rd. 44x1/6"	SS MS ST
MS256RD44SS MS256RD44MS MS256RD44ST	25 (1")	Rd. 44x1/6"	SS MS ST
MS326RD44SS MS326RD44MS MS326RD44ST	32 (1 1/4")	Rd. 44x1/6"	SS MS ST



Flange thread nipples for universal quick-action fittings

Order number	Flange	Thread	Material	Overall length [mm]
FG015PN40RD44SS	DN 15 PN 40	Rd. 44 x 1/6"	SS	75
FG020PN40RD44SS	DN 20 PN 40	Rd. 44 x 1/6"	SS	78
FG025PN40RD44SS	DN 25 PN 40	Rd. 44 x 1/6"	SS	77



Threaded weld-on connector with universal quick-action fittings

Order number	DN	Weld-on dimension	Material
ANRD44DN13SS	13	21.3x3.2	SS
ANRD44DN13SS21,3X1,6	13	21.3x3.2	SS
ANRD44DN19SS	19	26.9 / 3.2	SS
ANRD44DN19SS26,9X1,6	19	26.9 / 1/6	SS
ANRD44DN25SS	25	33.7 / 3.2	SS
ANRD44DN25SS33,7X2	25	33.7 / 2	SS



Double nipples

Order number	Thread	Material
DNRD44 SS	Rd. 44 x 1/6"	SS



Reduction nipples

Order number	Thread		Material	Seal form
	on the one side	on the other side		
RN012RD44SS	G 1/2	Rd. 44 x 1/6"	SS	fld. / con.
RN012NPTRD44SS	1/2" NPT	Rd. 44 x 1/6"	SS	Gew. / con.
RN034RD44SS	G 3/4	Rd. 44 x 1/6"	SS	fld. / con.
RN034NPT44SSKON	3/4" NPT	Rd. 44 x 1/6"	SS	Gew. / con.
RN010RD44SS	G 1	Rd. 44 x 1/6"	SS	fld. / con.
RN010NPT44 SSKON	1" NPT	Rd. 44 x 1/6"	SS	Gew. / con.

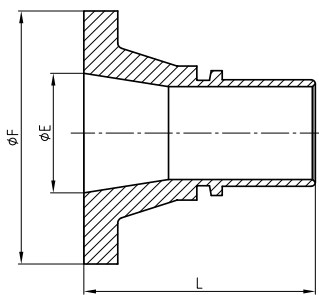


Reducers

Order number	Thread		Material	Seal form
	internal	external		
RS012RD44SS	G 1/2	Rd. 44 x 1/6"	SS	fld. / con.
RS012NPTRD44SS	1/2" NPT	Rd. 44 x 1/6"	SS	Gew. / con.
RS034RD44SS	G 3/4	Rd. 44 x 1/6"	SS	fld. / con.
RS034NPTRD44SSKON	3/4" NPT	Rd. 44 x 1/6"	SS	fld. / con.
RS010RD44SS	G 1	Rd. 44 x 1/6"	SS	fld. / con.
RS010NPTRD44SSKON	1" NPT	Rd. 44 x 1/6"	SS	Gew. / con.

Flanged hose fittings

Hose fitting with collar



Article	Size	Ø E	Ø F	approx. L
SB013	DN13	17.3	45	68
SB019	DN19	22.3	58	82
SB025	DN25	28.5	68	82
SB032	DN32	37.2	78	84
SB038	DN38	43.1	88	82
SB050	DN50	54.5	102	94
SB065	DN65	70.3	122	103
SB075	DN75	82.5	138	117
SB100	DN100	107.1	162	165
SB150	DN150	159.3	218	233

According to EN 14420-4 with flange
Flanged hose fitting suitable for
25 bar operating pressure (PN 25)
Hose fitting made of polypropylene PN 10

We also offer the PTFE-lined variant,
see page 74.

Other pressure ratings upon request

Materials:
For the abbreviation, see Materials register

Other materials upon request

Hose fitting
with collar and loose-type
flange, type SB



Hose fitting
with fixed flange,
type SF



Order number	DN	Flange Pressure ratings	Material Socket/Flange
SB 013SS SB 013SSST SB 013ST SF 013SS SF 013ST	13 (1/2")	DN 15 PN 40	SS/SS SS/ST ST/ST SS ST
SB 13ASA150SS SB 13ASA150SSST SB 13ASA150ST SF 13ASA150SS SF 13ASA150ST	13 (1/2")	ASME B16.3 150 lbs. 1/2"	SS/SS SS/ST ST/ST SS ST
SB 019SS SB 019SSST SB 019ST SF 019SS SF 019ST	19 (3/4")	DN 20 PN 40	SS/SS SS/ST ST/ST SS ST
SB 019ASA150SS SB 019ASA150SSST SB 019ASA150ST SF 019ASA150SS SF 019ASA150ST SB 019ASA300ST SF 019ASA300ST	19 (3/4")	ASME B16.3 150 lbs. 3/4" ASME B16.3 300 lbs. 3/4"	SS/SS SS/ST ST/ST SS ST ST/ST ST
SB 025SS SB 025SSST SB 025ST SB 025PP SB 025PPST SF 025SS SF 025ST	25 (1")	DN 25 PN 40	SS/SS SS/ST ST/ST PP/PP PP/ST SS ST
SB 025ASA150SS SB 025ASA150SSST SB 025ASA150ST SF 025ASA150SS SF 025ASA150ST	25 (1")	ASME B16.3 150 lbs. 1"	SS/SS SS/ST ST/ST SS ST
SB 025ASA300ST SF 025ASA300ST	25 (1")	ASME B16.3 300 lbs. 1"	ST/ST ST
SB 032SS SB 032SSST SB 032ST SB 032PP SB 032PPST SF 032ST SF 032SS	32 (1 1/4")	DN 32 PN 40	SS/SS SS/ST ST/ST PP/PP PP/ST ST SS
SB 032ASA150SS SB 032ASA150SSST SB 032ASA150ST SF 032ASA150SS SF 032ASA150ST	32 (1 1/4")	ASME B16.3 150 lbs. 1 1/4"	SS SS/ST ST/ST SS ST
SB 032ASA300ST SF 032ASA300ST	32 (1 1/4")	ASME B16.3 300 lbs. 1 1/4"	ST/ST ST

Order number	DN	Flange Pressure ratings	Material Socket/Flange
SB 038ST SB 038SS SB 038SSST SB 038STPP SB 038PP SF 038ST SF 038SS	38 (1 1/2")	DN 38 PN 40	ST/ST SS/SS SS/ST ST/PP PP/PP ST SS
SB 038ASA150ST SB 038ASA150SS SB 038ASA150SSST SF 038ASA150ST SF 038ASA150SS	38 (1 1/2")	ASME B16.3 150 lbs. 1 1/2"	ST/ST SS/SS SS/ST ST SS
SB 038ASA300ST SF 038ASA300ST	38 (1 1/2")	ASME B16.3 300 lbs. 1 1/2"	ST/ST ST
SB 050ST SB 050STSS SB 050SS SB 050MSST SB 050MS SB 050ALST SB 050AL SB 050PPST SB 050PP SF 050ST SF 050SS	50 (2")	DN 50 PN 16	ST/ST ST/SS SS/SS MS/ST MS/MS AL/ST AL/AL PP/PP PP/PP ST SS
SB 050ASA150ST SB 050ASA150SSST SB 050ASA150SS SF 050ASA150ST SF 050ASA150SS	50 (2")	ASME B16.3 150 lbs. 2"	ST/ST SS/ST SS/SS ST SS
SB 050ASA300ST SF 050ASA300ST	50 (2")	ASME B16.3 300 lbs. 2"	ST/ST ST
SB 065ST SB 065SSST SB 065SS SB 065MSST SB 065MS SB 065ALST SB 065AL SB 065PPST SB 065PP SF 065ST SF 065SS	63 (2 1/2")	DN 65 PN 16	ST/ST SS/ST SS/SS MS/ST MS/MS AL/ST AL/AL PP/ST PP/PP ST SS
SB 065ASA150ST SB 065ASA150SSST SB 065ASA150SS SF 065ASA150ST SF 065ASA150SS	63 (2 1/2")	ASME B16.3 150 lbs. 2 1/2"	ST/ST SS/ST SS/SS ST SS
SB 065ASA300ST SF 065ASA300ST	63 (2 1/2")	ASME B16.3 300 lbs. 2 1/2"	ST/ST ST

Flanged hose fittings

According to EN 14420-4 with flange
Flanged hose fitting suitable for
25 bar operating pressure (PN 25)
Hose fitting made of aluminium PN 16
Hose fitting made of polypropylene PN 10

Apart from that, we offer the
PTFE-lined variant, see page 74.

DN: Internal hose diameter in mm

Other pressure ratings upon request

Welding collar according to EN 1092-1 PN 16

Materials:
For the abbreviation, see Materials register

Other materials upon request

Hose fitting
with collar and loose-type
flange, type SB



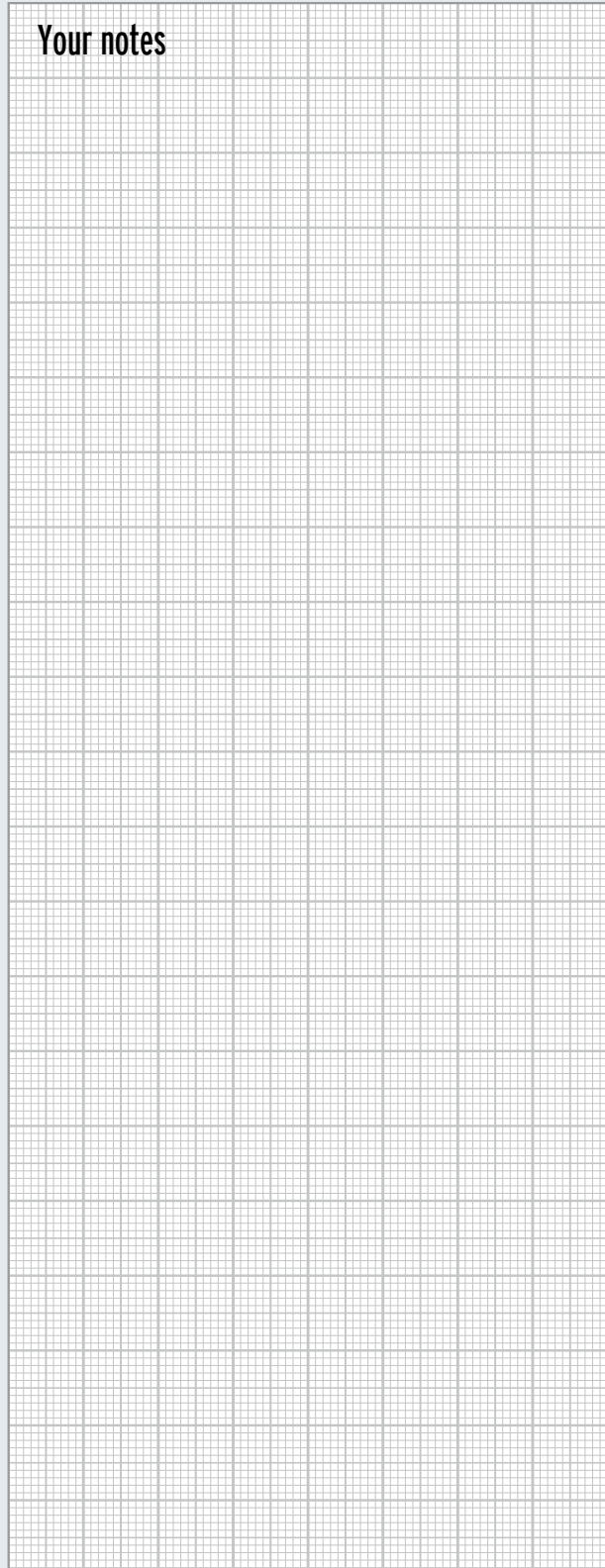
Hose fitting
with fixed flange,
type SF



Order number	DN	Flange Pressure ratings	Material Socket/flange		
SB 075ST	75 (3")	DN 80 PN 16	ST/ST		
SB 075SSST			SS/ST		
SB 075SS			SS/SS		
SB 075MSST			MS/ST		
SB 075MS			MS/MS		
SB 075ALST			AL/ST		
SB 075AL			AL/AL		
SB 075PPST			PP/ST		
SB 075PP			PP/PP		
SF 075ST			ST		
SF 075SS			SS		
SB 075ASA150ST	75 (3")	ASME B16.3 150 lbs. 3"	ST/ST		
SB 075ASA150SSST			SS/ST		
SB 075ASA150SS			SS/SS		
SB 075ASA300ST	75 (3")	ASME B16.3 300 lbs. 3"	ST/ST		
SF 075ASA300ST			ST		
SB 100ST	100 (4")	DN 100 DN 16	ST/ST		
SB 100SSST			SS/ST		
SB 100SS			SS/SS		
SB 100MSST			MS/ST		
SB 100MS			MS/MS		
SB 100ALST			AL/ST		
SB 100AL			AL/AL		
SB 100PPST			PP/ST		
SB 100PP			PP/PP		
SF 100ST			ST		
SF 100SS			SS		
SB 100ASA150ST			100 (4")	ASME B16.3 150 lbs. 4"	ST/ST
SB 100ASA150SSST					SS/ST
SB 100ASA150SS					SS/SS
SF 100ASA150ST	ST				
SF 100ASA150SS	SS				
SB 100ASA300ST	100 (4")	ASME B16.3 300 lbs. 4"	ST/ST		
SF 100ASA300ST			ST		
SB 125SSST	125 (5")	DN 125 PN 16	ST/ST		
SB 125STSS			ST/SS		
SB 125SS			SS/SS		
SF 125ST			ST		
SF 125SS			SS		

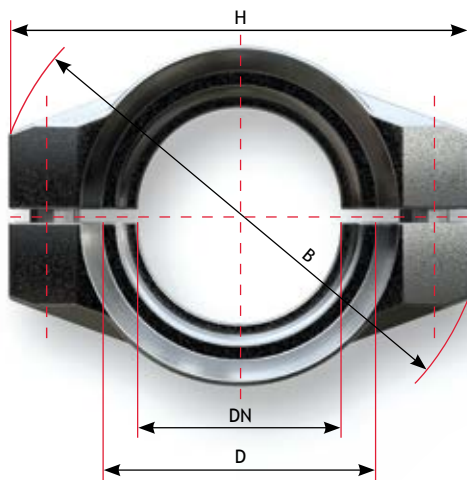
Order number	DN	Flange Pressure ratings	Material Socket/flange
SB 125ASA150ST SB 125ASA150SSST SB 125ASA150SS SF 125ASA150ST SF 125ASA150SS	125 (5")	ASME B16.3 150 lbs. 5"	ST/ST SS/ST SS/SS ST SS
SB 125ASA300ST SF 125ASA300ST	125 (5")	ASME B16.3 300 lbs. 5"	ST/ST ST
SB 150SSST SB 150STSS SB 150SS SB 150MSST SB 150MS SB 150ALST SB 150AL SF 150ST SF 150SS	150 (6")	DN 150 PN 16	ST/ST ST/SS SS/SS MS/ST MS/MS AL/ST AL/AL ST SS
SB 150ASA150ST SB 150ASA150SSST SB 150ASA150SS SF 150ASA150ST SF 150ASA150SS	150 (6")	ASME B16.3 150 lbs. 6"	ST/ST SS/ST SS/SS ST SS
SB 150ASA300ST SF 150ASA300ST	150 (6")	ASME B16.3 300 lbs. 6"	ST/ST ST
SB 200SSST SB 200STSS SB 200SS SF 200ST SF 200SS	200 (8")	DN 200 PN 16	ST/ST ST/SS SS/SS ST SS
SB 200ASA150ST SB 200ASA150SSST SB 200ASA150SS SF 200ASA150ST SF 200ASA150SS	200 (8")	ASME B16.3 150 lbs. 8"	ST/ST SS/ST SS/SS ST SS
SB 200ASA300ST SF 200ASA300ST	200 (8")	ASME B16.3 300 lbs. 8"	ST/ST ST

Your notes



Clamps

Clamp type KL



According to EN 14420-3

Clamps ready for mounting with screws and nuts according to DIN EN ISO 4762/ DIN EN ISO 4032 made of zinc-plated steel, in case of stainless steel of 1.4401

Materials: For the abbreviation, see Materials register

Technical changes reserved.





Clamps ready for mounting
with screws and nuts

Order number	NW	Clamping range min/max	Material	Dimensions			Quantity Screws + nuts
				H	B	L	
KL 13 X 5 SS KL 13 X 5 MS KL 13 X 5 AL	15	22–24	SS MS AL	51	59	50	4xM6x20
KL 19 X 6 SS KL 19 X 6 MS KL 19 X 6 AL	19	30–33	SS MS AL	63	68	50	4xM6x20
KL 25 X 6 SS KL 25 X 6 MS KL 25 X 6 AL	25	36–39	SS MS AL	69	75	50	4xM6x20
KL 32 X 6 SS KL 32 X 6 MS KL 32 X 6 AL	32	43–46	SS MS AL	76	77	50	4xM6x20
KL 38 X 6.5 SS KL 38 X 6.5 MS KL 38 X 6.5 AL	38	50–53	SS MS AL	83	85	50	4xM8x20
KL 50 X 8 SS KL 50 X 8 MS KL 50 X 8 AL	50	63–67	SS MS AL	102	106	57	4xM8x25
KL 65 X 7 SS KL 65 X 7 MS KL 65 X 7 AL	63	78–82	SS MS AL	120	121	75	4xM8x25
KL 75 X 8 SS KL 75 X 8 MS KL 75 X 8 AL	75	89–93	SS MS AL	132	133	77	4xM8x25
KL 100 X 8 SS KL 100 X 8 MS KL 100 X 8 AL	100	114–119	SS MS AL	166	167	120	4xM10x40
KL 125 X 10 MS KL 125 X 10 AL	125	143–148	MS AL	211 190	214 192	145 145	6xM12x50 6xM10x50
KL 150 X 10 AL	150	167–173	AL	227	235	179	6xM12x50
KL 200 X 12 AL	200	222–229	AL	284	291	239	6xM12x60

Male hose tail with safety clamps, heavy design

According to EN 14423 with external thread

Male hose tail with safety clamps suitable for temperatures up to 210 °C and 18 bar operating pressure (PN 18)

Male hose tail with safety clamps, heavy design, on the one side external thread, on the other side hose fitting with safety collar

DN: Internal hose diameter

Thread: R = ISO 7-1, NPT = ASME B1.20.1
G = ISO 228-1

Seal form:

fld. = flat-sealing

Gew. = sealing in the thread

Materials:

For the abbreviation, see Materials register

Other materials upon request



Male hose tail with safety clamps, heavy design

Order number	DN	Thread	Material	Seal form
DA 13612ST	13 (1/2")	R 1/2	ST	Gew.
DA 13612SS			SS	Gew.
DA 13612MS			MS	Gew.
DA 13612STNPT	13 (1/2")	1/2" NPT	ST	Gew.
DA 13612SSNPT			SS	Gew.
DA 13612MSNPT			MS	Gew.
DA 13634ST	13 (1/2")	R 3/4	ST	Gew.
DA 13634SS			SS	Gew.
DA 13634MS			MS	Gew.
DA 19734ST	19 (3/4")	R 3/4	ST	Gew.
DA 19734SS			SS	Gew.
DA 19734MS			MS	Gew.
DA 19734STNPT	19 (3/4")	3/4" NPT	ST	Gew.
DA 19734SSNPT			SS	Gew.
DA 19734MSNPT			MS	Gew.
DA 19710ST	19 (3/4")	R 1	ST	Gew.
DA 19710SS			SS	Gew.
DA 19710MS			MS	Gew.
DA 25810ST	25 (1")	R 1	ST	Gew.
DA 25810SS			SS	Gew.
DA 25810MS			MS	Gew.
DA 25810STNPT	25 (1")	1" NPT	ST	Gew.
DA 25810SSNPT			SS	Gew.
DA 25810MSNPT			MS	Gew.
DA 32854ST	32 (1 1/4")	R 1 1/4	ST	Gew.
DA 32854SS			SS	Gew.
DA 32854MS			MS	Gew.
DA 32854STNPT	32 (1 1/4")	1 1/4" NPT	ST	Gew.
DA 32854SSNPT			SS	Gew.
DA 32854MSNPT			MS	Gew.
DA 38832ST	38 (1 1/2")	R 1 1/2	ST	Gew.
DA 38832SS			SS	Gew.
DA 38832MS			MS	Gew.
DA 38832STNPT	38 (1 1/2")	1 1/2" NPT	ST	Gew.
DA 38832SSNPT			SS	Gew.
DA 38832MSNPT			MS	Gew.
DA 50920ST	50 (2")	R 2	ST	Gew.
DA 50920SS			SS	Gew.
DA 50920MS			MS	Gew.
DA 50920STNPT	50 (2")	2" NPT	ST	Gew.
DA 50920SSNPT			SS	Gew.
DA 50920MSNPT			MS	Gew.

Female hose tail with safety clamps, heavy design

According to EN 14423 with union nut

Female hose tail with safety clamps suitable for temperatures up to 210°C and 18 bar operating pressure (PN 18)

Female hose tail with safety clamps, heavy design, on the one side swivel nut, on the other side hose fitting with safety collar

DN: Internal hose diameter in mm

Thread: R = ISO 7-1, NPT = ASME B1.20.1,
G = ISO 228-1

Seal form:

fld. = flat-sealing

Gew. = sealing in the thread

Materials:

For the abbreviation, see Materials register

Other materials upon request



Female hose tail with safety clamps,
heavy design

Order number	DN	Thread	Material	Seal form
DM 1361ST		G 1/2	ST	fld.
DM 1361STKO	13	R 1/2	ST	Gew.
DM 1361SS	(1/2")	G 1/2	SS	fld.
DM 1361MS		G 1/2	MS	fld.
DM 13634ST	13		ST	fld.
DM 13634SS	(1/2")	G 3/4	SS	fld.
DM 13634MS			MS	fld.
DM 19734ST		G 3/4	ST	fld.
DM 19734STKO	19	R 3/4	ST	Gew.
DM 19734SS	(3/4")	G 3/4	SS	fld.
DM 19734MS		G 3/4	MS	fld.
DM 19710ST	19		ST	fld.
DM 19710SS	(3/4")	G 1	SS	fld.
DM 19710MS			MS	fld.
DM 25810ST		G 1	ST	fld.
DM 25810STKO	25 (1")	R 1	ST	Gew.
DM 25810SS		G 1	SS	fld.
DM 25810MS		G 1	MS	fld.
DM 25854ST			ST	fld.
DM 25854SS	25 (1")	G 1 1/4	SS	fld.
DM 25854MS			MS	fld.
DM 32854ST		G 1 1/4	ST	fld.
DM 32854STKO	32	R 1 1/4	ST	Gew.
DM 32854SS	(1 1/4")	G 1 1/4	SS	fld.
DM 32854MS		G 1 1/4	MS	fld.
DM 38832ST		G 1 1/2	ST	fld.
DM 38832STKO	38	R 1 1/2	ST	Gew.
DM 38832SS	(1 1/2")	G 1 1/2	SS	fld.
DM 38832MS		G 1 1/2	MS	fld.
DM 50920ST		G 2	ST	fld.
DM 50920STKO	50	R 2	ST	Gew.
DM 50920SS	(2")	G 2	SS	fld.
DM 50920MS		G 2	MS	fld.

Universal quick-action fittings, heavy design

Union nut or external thread Rd. 44x1/6", suitable for 18 bar operating pressure (PN 18) for steam and hot water, 40 bar operating pressure (PN 40) for cold water and compressed air. Component marking TÜV.A-323

Female hose tail with safety clamps, heavy design, on the one side swivel nut, on the other side hose fitting with safety collar

Male hose tail with safety clamps, heavy design, on the one side external thread, on the other side hose fitting with safety collar

DN: Internal hose diameter in mm

Thread: Rd. = Round thread according to DIN 405

Seal form: conical

Materials:
For the abbreviation, see Materials register

Other materials upon request



Female hose tail with safety clamps, heavy design

Order number	DN	Thread	Material
DM13RD44SS DM13RD44MS DM13RD44ST	13 (1/2")	Rd. 44x1/6"	SS MS ST
DM20RD44SS DM20RD44MS DM20RD44ST	19 (3/4")	Rd. 44x1/6"	SS MS ST
DM25RD44SS DM25RD44MS DM25RD44ST	25 (1")	Rd. 44x1/6"	SS MS ST



Male hose tail with safety clamps, heavy design

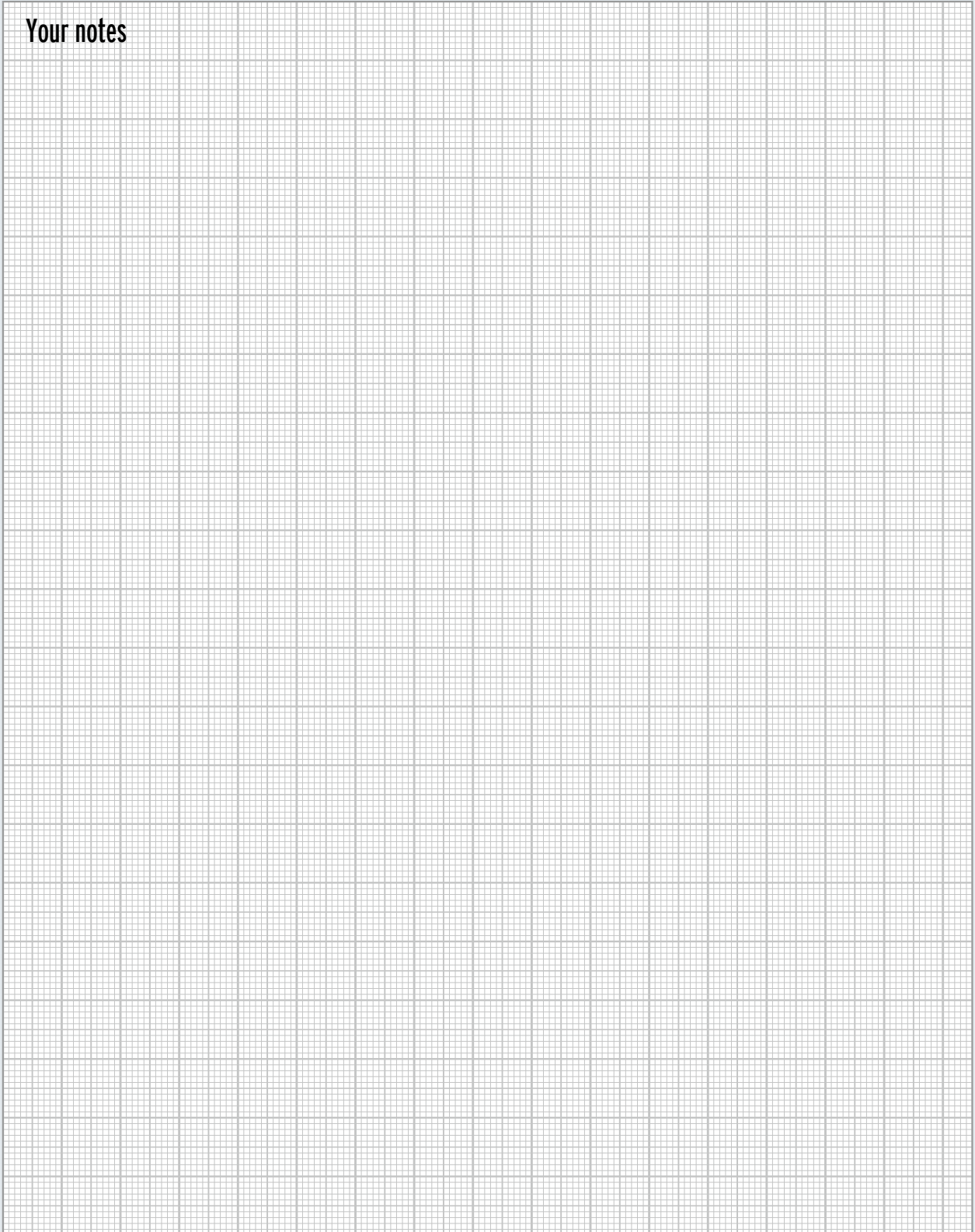
Order number	DN	Thread	Material
DA13RD44SS DA13RD44MS DA13RD44ST	13 (1/2")	Rd. 44x1/6"	SS MS ST
DA20RD44SS DA20RD44MS DA20RD44ST	19 (3/4")	Rd. 44x1/6"	SS MS ST
DA25RD44SS DA25RD44MS DA25RD44ST	25 (1")	Rd. 44x1/6"	SS MS ST



Knurled nut for universal fitting

Order number	Nominal width	Thread	Material	Seal form
DMRD44SS	DN 19/ DN 25	Rd. 44 x 1/6"	SS	con.
DMRD44SS13SS	DN13	Rd. 44 x 1/6"	SS	con.

Your notes



Flanged hose fittings, heavy design

Suitable for 18 bar operating pressure (PN 18)
at 210°C steam

Type DB

hose fitting, heavy design with collar and
loose-type flange, hose fitting with safety
collar according to EN 14423

Type DF

hose fitting, heavy design with fixed flange,
hose fitting with safety collar according
to EN 14423

DN: Internal hose diameter in mm

Materials:

For the abbreviation, see Materials register

Other pressure ratings upon request

Hose fitting
type DB



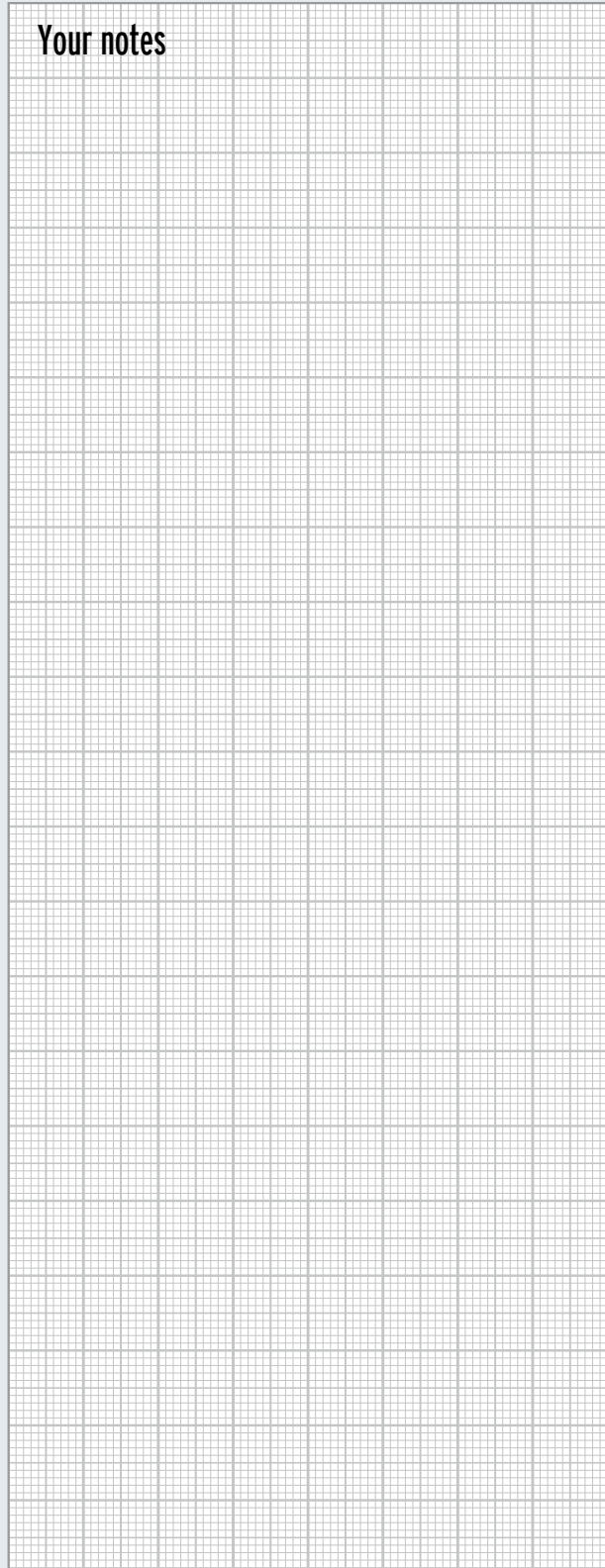
Hose fitting
type DF



Order number	DN	Flange	Material Socket/flange
DB 013ST DB 013SSST	13 (1/2")	DN 16 PN 40	ST/ST SS/ST
DB 013SSST DF 013ST DF 013SS	13 (1/2")	DN 16 PN 40	SS/ST ST/ST SS/SS
DB 013ASA150ST DB 013ASA150ST	13 (1/2")	ASME B16.3 150 lbs. 1/2"	ST/ST SS/ST
DB 013ASA300ST DF 013ASA300ST	13 (1/2")	ASME B16.3 300 lbs. 1/2"	ST/ST ST/ST
DB 019ST DB 019SSST	19 (3/4")	DN 20 PN 40	ST/ST SS/ST
DB 019SSST DF 019ST DF 019SS	19 (3/4")	DN 20 PN 40	SS/ST ST/ST SS/SS
DB 019ASA150ST DF 019ASA150ST	19 (3/4")	ASME B16.3 150 lbs. 3/4"	ST/ST ST/ST
DB 019ASA300ST DF 019ASA300ST	19 (3/4")	ASME B16.3 300 lbs. 3/4"	ST/ST ST/ST
DB 025ST DB 025SSST	25 (1")	DN 25 PN 40	ST/ST SS/ST
DB 025SSST DF 025ST DF 025SS	25 (1")	DN 25 PN 40	SS/ST ST/ST SS/SS
DB 025ASA150ST DF 025ASA150ST	25 (1")	ASME B16.3 150 lbs. 1"	ST/ST ST/ST
DB 025ASA300ST DF 025ASA300ST	25 (1")	ASME B16.3 300 lbs. 1"	ST/ST ST/ST
DB 032ST DB 032SSST	32 (1 1/4")	DN 32 PN 40	ST/ST SS/ST
DB 032SSST DF 032ST DF 032SS	32 (1 1/4")	DN 32 PN 40	SS/ST ST/ST SS/SS
DB 032ASA150ST DF 032ASA150ST	32 (1 1/4")	ASME B16.3 150 lbs. 1 1/4"	ST/ST ST/ST
DB 032ASA300ST DF 032ASA300ST	32 (1 1/4")	ASME B16.3 300 lbs. 1 1/4"	ST/ST ST/ST

Order number	DN	Flange	Material Socket/flange
DB 038ST DB 038SSST	38 (1 1/2")	DN 40 PN 40	ST/ST SS/ST
DB 038SSST DF 038ST DF 038SS	38 (1 1/2")	DN 40 PN 40	SS/ST ST/ST SS/SS
DB 038ASA150ST DF 038ASA150ST	38 (1 1/2")	ASME B16.3 150 lbs. 1 1/2"	ST/ST ST/ST
DB 038ASA300ST DF 038ASA300ST	38 (1 1/2")	ASME B16.3 300 lbs. 1 1/2"	ST/ST ST/ST
DB 050ST DB 050SSST	50 (2")	DN 50 PN 40	ST/ST SS/ST
DB 050SS DF 050ST DF 050SS	50 (2")	DN 50 PN 40	SS/SS ST/ST SS/SS
DB 050ASA150ST DF 050ASA150ST	50 (2")	ASME B16.3 150 lbs. 2"	ST/ST ST/ST
DB 050ASA300ST DF 050ASA300ST	50 (2")	ASME B16.3 300 lbs. 2"	ST/ST ST/ST

Your notes



Clamps, heavy design

According to EN 14423

Type KLD

clamps ready for mounting with screws and nuts according to DIN EN ISO 4762/ DIN EN ISO 4032 made of zinc-plated steel, in case of stainless steel of 1.4401

Type KLD/KNS

clamps ready for mounting with screws and nuts according to DIN EN ISO 4762/ DIN EN ISO 4032 made of stainless steel 1.4401 With holder for anti-kinking sleeve.

Materials:

For the abbreviation, see Materials register



Clamp
type KLD



Clamp
type KLD/KNS

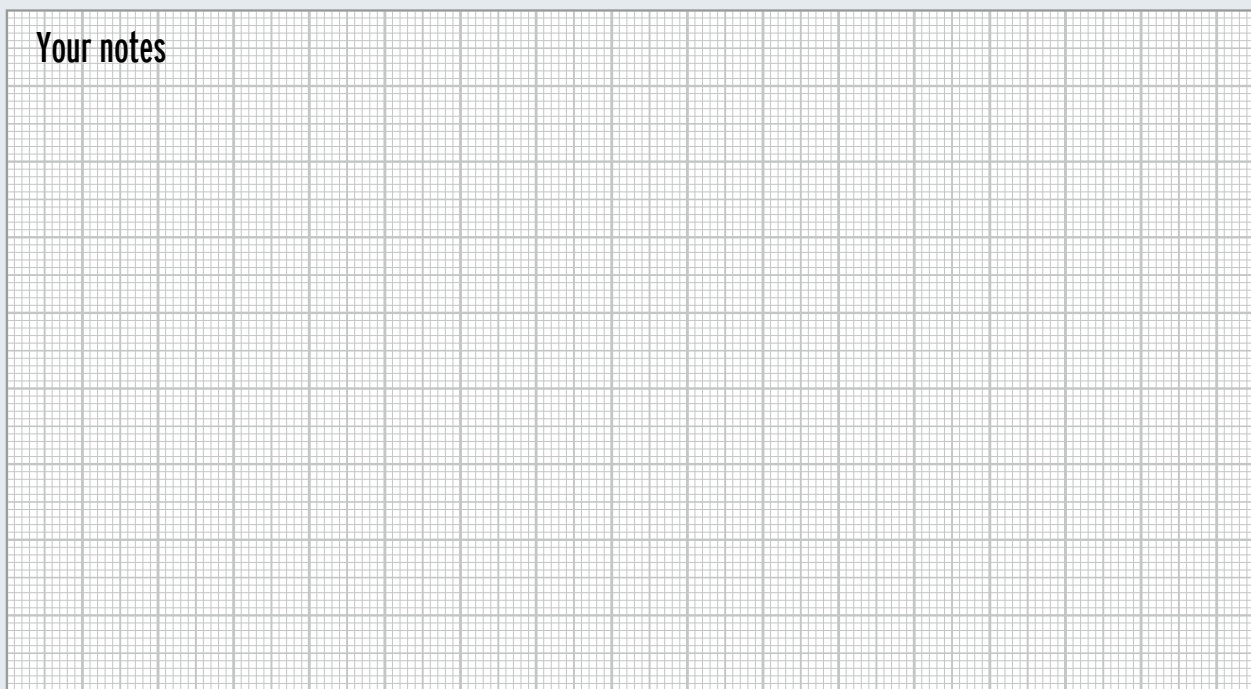


Clamp
type KLD/KNS
anti-kinking sleeve



Order number	NW	Clamping range min/max	Material	Dimensions			Quantity Screws + nuts
				H	B	L	
KLD 13 X 5 MS KLD 13 X 6 SS KLD 13 X 6 MS KLD 13 X 7 MS	13	22–24 26–28	MS SS MS MS	54	57	65	4xM6x20
KLD 19 X 6 MS KLD 19 X 7 SS KLD 19 X 7 SSKNS KLD 19 X 7 MS	19	30–33	MS SS SS MS	67 68 70	70 71 37	65 84 65	4xM8x25
KLD 25 X 6.5 MS KLD 25 X 7.5 SS KLD 25 X 7.5 SSKNS KLD 25 X 7.5 MS	25	39–41	MS SS SS MS	76 77 80	79 71 37	65 84 65	4xM8x25
KLD 32 X 6 MS KLD 32 X 8 SS KLD 32 X 8 MS	32	47–50	MS SS MS	86 88	89 90	77 77	4xM8x25
KLD 38 X 8 SS KLD 38 X 8 MS KLD 38 X 10 MS	38	57–60	SS MS MS	102 106	107 111	90 90	4xM10x40
KLD 50 X 9 SS KLD 50 X 9 MS KLD 50 X 10 MS KLD 50 X 12 MS	50	67–69 69–71 73–76	SS MS MS MS	113 116 128	117 121 132	100 100 100	4xM10x40

Your notes



Double nipples

Thread: G = ISO 228-1
 Rd. = Round thread according to DIN 405

Materials:
 For the abbreviation, see Materials register

Other materials upon request



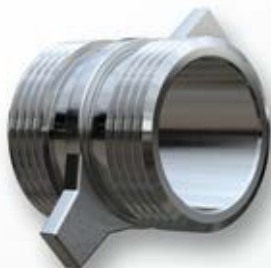
Fig. 1



Fig. 2

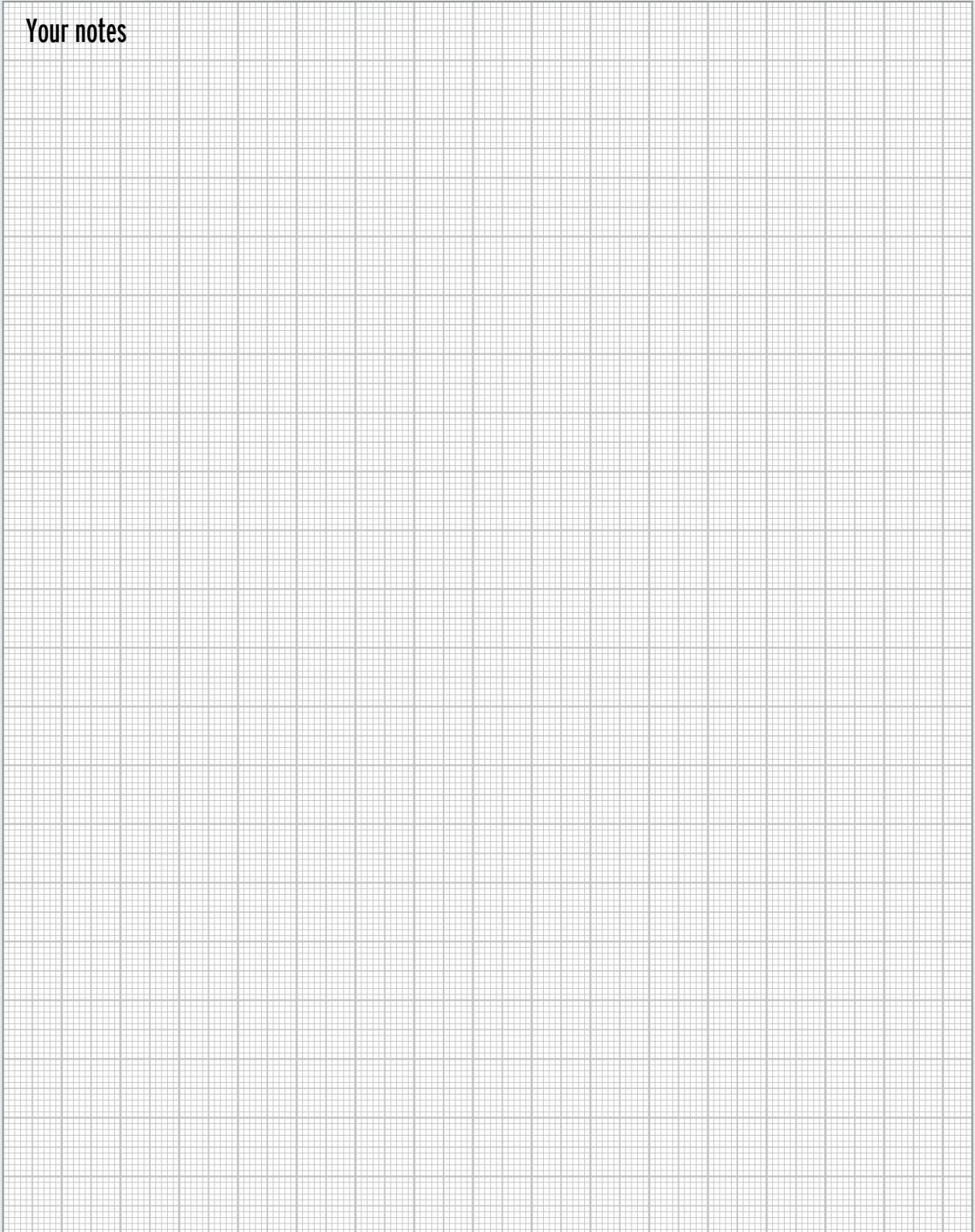


Fig. 3



Order number	Thread	Material	Fig.
DN 012 SS DN 012 MS	G 1/2	SS MS	1 1
DN 034 SS DN 034 MS	G 3/4	SS MS	1 1
DN 010 SS DN 010 MS	G 1	SS MS	1 1
DN 054 SS DN 054 MS	G 1 1/4	SS MS	1 1
DN 032 SS DN 032 MS	G 1 1/2	SS MS	1 2
DN 020 SS DN 020 MS	G 2	SS MS	1 2
DN 052 SS DN 052 MS	G 2 1/2	SS MS	1 1
DN 030 SS DN 030 MS	G 3	SS MS	1 2
DN 040 SS DN 040 MS	G 4	SS MS	1 2
DN 550 MS DN 550 AL	5 1/2" DIN 11	MS AL	3 3
DNRD52 SS	Rd. 52 x 1/6"	SS	-

Your notes



Order number	Thread		Material	Seal form	Fig.
	on the one side	on the other side			
RN 012034 SS RN 012034 MS	G 1/2	G 3/4	SS MS	fld. fld.	1 1
RN 034010 SS RN 034010 MS	G 3/4	G 1	SS MS	fld. fld.	1 1
RN 010054 SS RN 010054 MS	G 1	G 1 1/4	SS MS	fld. fld.	1 1
RN 010032 SS RN 010032 MS	G 1	G 1 1/2	SS MS	fld. fld.	1 1
RN 010020 SS RN 010020 MS	G 1	G 2	SS MS	fld. fld.	1 1
RN 054032 SS RN 054032 MS	G 1 1/4	G 1 1/2	SS MS	fld. fld.	1 1
RN 054020 SS RN 054020 MS	G 1 1/4	G 2	SS MS	fld. fld.	1 1
RN 032020 SS RN 032020 MS	G 1 1/2	G 2	SS MS	fld. fld.	1 1
RN 20052 SS RN 20052 MS	G 2	G 2 1/2	SS MS	fld. fld.	1 1
RN 020030 MS RN 020030 SS	G 2	G 3	MS SS	fld. fld.	1 1
RN 052030 SS RN 052030 MS	G 2 1/2	G 3	SS MS	fld. fld.	1 1
RN 030040 MS	G 3	G 4	MS	fld.	1
RN 030550 SS RN 030550 MS RN 030550 AL	G 3	5 1/2" DIN 11	SS MS AL	fld. fld. fld.	3 1 1
RN 040550 SS RN 040550 MS RN 040550 AL	G 4	5 1/2" DIN 11	SS MS AL	fld. fld. fld.	3 2 2

Order number	Thread		Material	Seal form	Fig.
	internal	external			
RS 012012 MS	G 1/2	G 1/2	MS	fld.	1
RS 012034 SS	G 1/2	G 3/4	SS	fld.	1
RS 012034 MS			MS	fld.	1
RS 034034 MS	G 3/4	G 3/4	MS	fld.	1
RS 034010 SS	G 3/4	G 1	SS	fld.	1
RS 034010 MS			MS	fld.	1
RS 010034 SS	G 1	G 3/4	SS	fld.	1
RS 010034 MS			MS	fld.	1
RS 010010 MS	G 1	G 1 1" NPT	MS	fld.	1
RS 010010 NPTMS			MS	Gew. / fld.	1
RS 010054 SS	G 1	G 1 1/4	SS	fld.	1
RS 010054 MS			MS	fld.	1
RS 010032 SS	G 1	G 1 1/2	SS	fld.	1
RS 010032 SS			MS	fld.	1
RS 010020 SS	G 1	G 2	SS	fld.	1
RS 010020 MS			MS	fld.	1
RS 010NPT010 MS	1" NPT	G 1	MS	Gew.	1
RS 054010 SS	G 1 1/4	G 1	SS	fld.	1
RS 054010 MS			MS	fld.	1
RS 054054 MS	G 1 1/4	G 1 1/4	MS	fld.	1
RS 054032 SS	G 1 1/4	G 1 1/2	SS	fld.	1
RS 054032 MS			MS	fld.	1
RS 054020 SS	G 1 1/4	G 2	SS	fld.	1
RS 054020 MS			MS	fld.	1
RS 032010 SS	G 1 1/2	G 1	SS	fld.	1
RS 032010 MS			MS	fld.	1
RS 032054 SS	G 1 1/2	G 1 1/4	SS	fld.	1
RS 032054 MS			MS	fld.	1
RS 032032 MS	G 1 1/2	G 1 1/2	MS	fld.	1
RS 0320120 SS	G 1 1/2	G 2	SS	fld.	1
RS 0320120 MS			MS	fld.	1
RS 020010 SS	G 2	G 1	SS	fld.	1
RS 020010 SS			MS	fld.	1
RS 020054 SS	G 2	G 1 1/4	SS	fld.	1
RS 020054 MS			MS	fld.	1
RS 020032 SS	G 2	G 1 1/2	SS	fld.	1
RS 020032 MS			MS	fld.	1
RS 020020 MS	G 2	G 2 2" NPT	MS	fld.	1
RS 020020NPT MS			MS	Gew. / fld.	1
RS 020052 SS	G 2	G 2 1/2	SS	fld.	2
RS 020052 MS			MS	fld.	2
RS 020030 SS	G 2	G 3	SS	fld.	1
RS 020030 MS			MS	fld.	1
RS 020NPT020 MS	2" NPT	G 2	MS	Gew. / fld.	1
RS 054020 SS	G 1 1/4	G 2	SS	fld.	1
RS 054020 MS			MS	fld.	2

Order number	Thread		Material	Seal form	Fig.
	internal	external			
RS 054052 MS	G 1 1/4	G 2	MS	fld.	1
RS 052030 SS	G 2 1/2	G 3	SS	fld.	1
RS 052030 MS			MS	fld.	1
RS 030020 SS	G 3	G 2	SS	fld.	1
RS 030020 MS			MS	fld.	1
RS 030052 SS	G 3	G 2 1/2	SS	fld.	1
RS 030052 MS			MS	fld.	1
RS 030030 MS	G 3	G 3 3" NPT	MS	fld.	1
RS 030030NPT MS			MS	Gew. / fld.	1
RS 030040 SS	G 3	G 4	SS	fld.	1
RS 030040 MS			MS	fld.	1
RS 030550 SS	G 3	5 1/2" DIN 11	MS	fld.	3
RS 030550 MS			AL	fld.	1
RS 030550 AL			AL	fld.	1
RS 030NPT030 MS	3" NPT	G 3	MS	Gew. / fld.	1
RS 040030 SS	G 4	G 3	SS	fld.	1
RS 040030 MS			MS	fld.	2
RS 040040 MS	G 4	G 4 4" NPT	MS	fld.	1
RS 040040NPT MS			MS	Gew. / fld.	1
RS 040550 SS	G 4	5 1/2" DIN 11	SS	fld.	3
RS 040550 MS			MS	fld.	3
RS 040550 AL			AL	fld.	3
RS 040NPT040 MS	4" NPT	G 4	MS	Gew. / fld.	1
RS 550020 SS	5 1/2" DIN 11	G 2	SS	fld.	3
RS 550020 MS			MS	fld.	3
RS 550030 SS	5 1/2" DIN 11	G 3	SS	fld.	3
RS 550030 MS			MS	fld.	3
RS 550030 AL			AL	fld.	3
RS 550040 SS	5 1/2" DIN 11	G 4	SS	fld.	3
RS 550040 MS			MS	fld.	3
RS 550040 AL			AL	fld.	3

Double sockets, reducing sockets, blind caps, blind plugs

Double socket, identical internal thread on both sides: Thread sealing made of polyurethane, in case of stainless steel of PTFE

Reducing socket with different internal threads: Thread sealing made of polyurethane, in case of stainless steel of PTFE

Blind cap with internal thread on the one side, and button for chain on the other side: Thread sealing made of polyurethane, in case of stainless steel of PTFE with sealing bore

Blind plug with external thread on the one side, and button for chain on the other side

Thread: G = ISO 228-1

Materials:
For the abbreviation, see Materials register

Other materials upon request



Blind plugs

Order number	Thread	Material
BS 010 MS	G 1	MS
BS 054 MS	G 1 1/4	MS
BS 032 MS	G 1 1/2	MS
BS 020 MS	G 2	MS
BS 052 MS	G 2 1/2	MS
BS 030 MS	G 3	MS
BS 550 MS	5 1/2"	MS
BS 550 AL	DIN 11	AL



Blind caps

Order number	Thread	Material
BK 012 SS	G 1/2	SS
BK 012 MS		MS
BK 034 SS	G 3/4	SS
BK 034 MS		MS
BK 010 SS	G 1	SS
BK 010 MS		MS
BK 054 SS	G 1 1/4	SS
BK 054 MS		MS
BK 032 SS	G 1 1/2	SS
BK 032 MS		MS
BK 020 SS	G 2	SS
BK 020 MS		MS
BK 052 SS	G 2 1/2	SS
BK 052 MS		MS
BK 030 SS	G 3	SS
BK 030 MS		MS
BK 040 SS	G 4	SS
BK 040 MS		MS
BK 550 SS	5 1/2" DIN 11	SS
BK 550 MS		MS
BK 550 AL		AL

Order number	Thread	Material	Dimensions			Fig.
			D	d	L	
AN 012 STKO AN 012 SSKO	R 1/2	ST SS	21	13	35	1 1
AN 012 STNPT	1/2" NPT	ST	21	13	35	1
AN 034 STKO AN 034 SSKO	R 3/4"	ST SS	27	18	35	1 1
AN 034 STNPT	3/4" NPT	ST	27	18	35	1
AN 010 ST AN 010 SS	G 1	ST SS	33	23	35	1
AN 010 STNPT	1" NPT	ST	33	23	35	1
AN 054 ST AN 054 SS	G 1 1/4	ST SS	42	32	35	1
AN 054 STNPT	1 1/4" NPT	ST	42	32	45	1
AN 032 ST AN 032 SS	G 1 1/2	ST SS	48	38	35	1
AN 032 STNPT	1 1/2" NPT	ST	48	38	45	1
AN 020 ST AN 020 SS	G 2	ST SS	60	48	45	1
AN 020 STNPT	2" NPT	ST	60	48	45	1
AN 052 ST AN 052 SS	G 2 1/2	ST SS	75	63	45	1
AN 052 STNPT	2 1/2" NPT	ST	75	63	60	1
AN 030 ST AN 030 SS	G 3	ST SS	89	75	60	1
AN 030 STNPT	3" NPT	ST	89	75	60	1
AN 040 ST AN 040 SS	G 4	ST SS	114	100	45	1
AN 040 STNPT	4" NPT	ST	114	100	60	1
AN 550 ST AN 550 SS	5 1/2" DIN 11	ST SS	140	108	60	2 2
AN 050 ST AN 050 STNPT	G 5 5" NPT	ST ST	140 142	122 127	60	1 1
AN 060 ST AN 060 STNPT	G 6 6" NPT	ST ST	165 168	147 150	60	1 1

Flange thread nipples

Flange according to EN 1092-1 suitable for 16 bar operating pressure (PN 16), polypropylene 10 bar (PN 10)

Apart from that, we offer the PTFE-lined variant, see page 74.

Thread: G = ISO 228-1, R = ISO 7-1
Rd. = Round thread according to DIN 405

Other pressure ratings upon request

Other materials upon request

Fig. 1

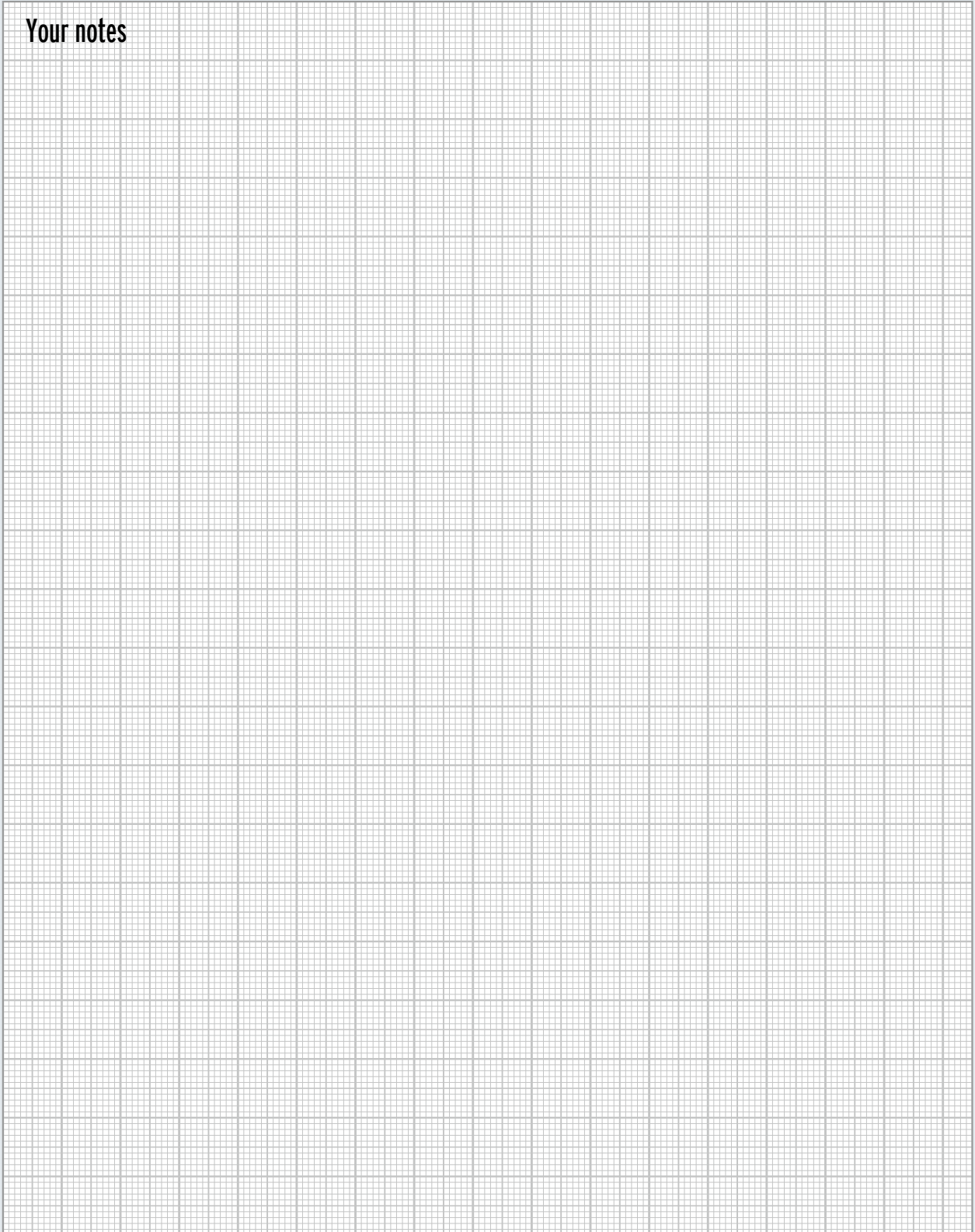


Fig. 2



Order number	Flange	Thread	Material	Overall length [mm]	Fig.
FG 025 ST	DN 25	G 1	ST	73	2
FG 025 SS		G 1	SS	73	2
FG 025 PPKO	DN 25	R 1"	PP	41	1
FG 032 ST	DN 32	G 1 1/4	ST	75	2
FG 032 SS			SS	75	2
FG 040 ST	DN 40	G 1 1/2	ST	77	2
FG 040 SS			SS	77	2
FG 040 PPKO	DN 40	R 1 1/2"	PP	60	1
FG 04020 ST	DN 40	G 2	ST	87	2
FG 04020 SS			SS	87	2
FG 050 ST	DN 50	G 2	ST	90	2
FG 050 SS			SS	90	2
FG 050 MS			MS	37	1
FG 050 PPKO	DN 50	R 2"	PP	60	1
FG 065 ST	DN 65	R 2 1/2	ST	90	2
FG 065 SS			SS	90	2
FG 065030 ST	DN 65	G 3	ST	90	2
FG 065030 SS			SS	90	2
FG 080 ST	DN 80	G 3	ST	95	2
FG 080 SS			SS	95	2
FG 080 MS			MS	46	1
FG 080PPKO	DN 80	R 3"	PP	68	1
FG 100 ST	DN 100	G 4	ST	97	2
FG 100 SS			SS	97	2
FG 100 MS			MS	55	1
FG 100 AL			AL	55	1
FG 100550 ST	DN 100	5 1/2" DIN 11	ST	97	2
FG 100550 SS			SS	97	2
FG 100550 AL			AL	83	1

Your notes



Linings and coatings

In order to protect the connections of the **marsoflex**® hose lines against aggressive media, they are coated with plastics such as E-CTFE (Halar®), lined with PTFE (alternatively PFA) or the PTFE hose is inserted and they are then crimped.

PTFE is offered as white virginal and electrically insulating versions. For applications requiring electrically conductive properties antistatic PTFE (black) is used. Both PTFE variants are FDA-compliant.

Coating

The medium-contacting areas of the fitting or coupling are coated with E-CTFE or a comparable plastic. In this way, effective corrosion protection against aggressive media is achieved.

Lining

A thick-walled PTFE mould is integrated into all areas of the fitting that come into contact with the medium. This mould protects the fitting or

coupling from the chemical corrosion by acids and lyes. Due to the excellent chemical resistance, PTFE is a safe and economic alternative to expensive special alloys such as Hastelloy for example.

Flange

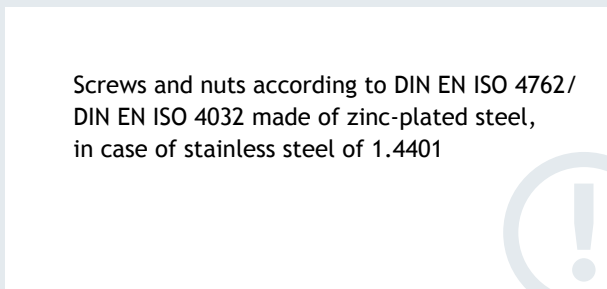
The PTFE hose is made malleable by heating it up. In this condition, it is pulled through the fitting or coupling and crimped according to the connection end, i.e. adjusted to the connection. The advantage of crimping is that no dead space form in the area of the transition from the fitting to the hose at which medium residues may gather. Consequently, the highest level of cleanliness possible is guaranteed for sensitive areas such as the pharmaceutical and food industries. The use of a fully automated system for crimping PTFE hoses in addition guarantees large quantities with constantly high quality.


Do you require individual solutions with regard to the lining and coating?
Please contact us.




Spare parts and accessories

Screws and nuts according to DIN EN ISO 4762/
DIN EN ISO 4032 made of zinc-plated steel,
in case of stainless steel of 1.4401




 **Hand lever**
with bolt and ring made of stainless steel


Order number	Size	Material ²
KKH 34	1/2" – 3/4"	SS
KKH 10	1"	SS
KKH 65	1 1/4" – 2 1/2"	SS
KKH 50	3" – 5"	SS
KKH 60	6"	SS

 **Screws and nuts**


Order number	Size	Material
SM 6 X 20	M 6x20	ST
SM 6 X 20 SS		SS
SM 8 X 25	M 8x25	ST
SM 8 X 25 SS		SS
SM 10 X 40	M 10x40	ST
SM 10 X 40 SS		SS
SM 12 X 50	M 12x50	ST
SM 12 X 50 SS		SS
SM 12 X 60	M 12x60	ST
SM 12 X 60 SS		SS

 **Installation wrench**
for TW couplings


Order number	Size	Material ²
TS 50	VK/MK 50	ST
TS 80	VK/MK 80	ST
TS 100	VK/MK 100	ST

 **Installation wrench for groove nuts**


Order number	Size	Material
HS 1	Ø 90 – Ø 180	ST

 **Installation wrench for nuts**
DIN 11 and Storz A, B, C

Order number	Size	Material
GS 1	Ø 60 – Ø 90	ST
GS 2	Ø 90 – Ø 155	ST

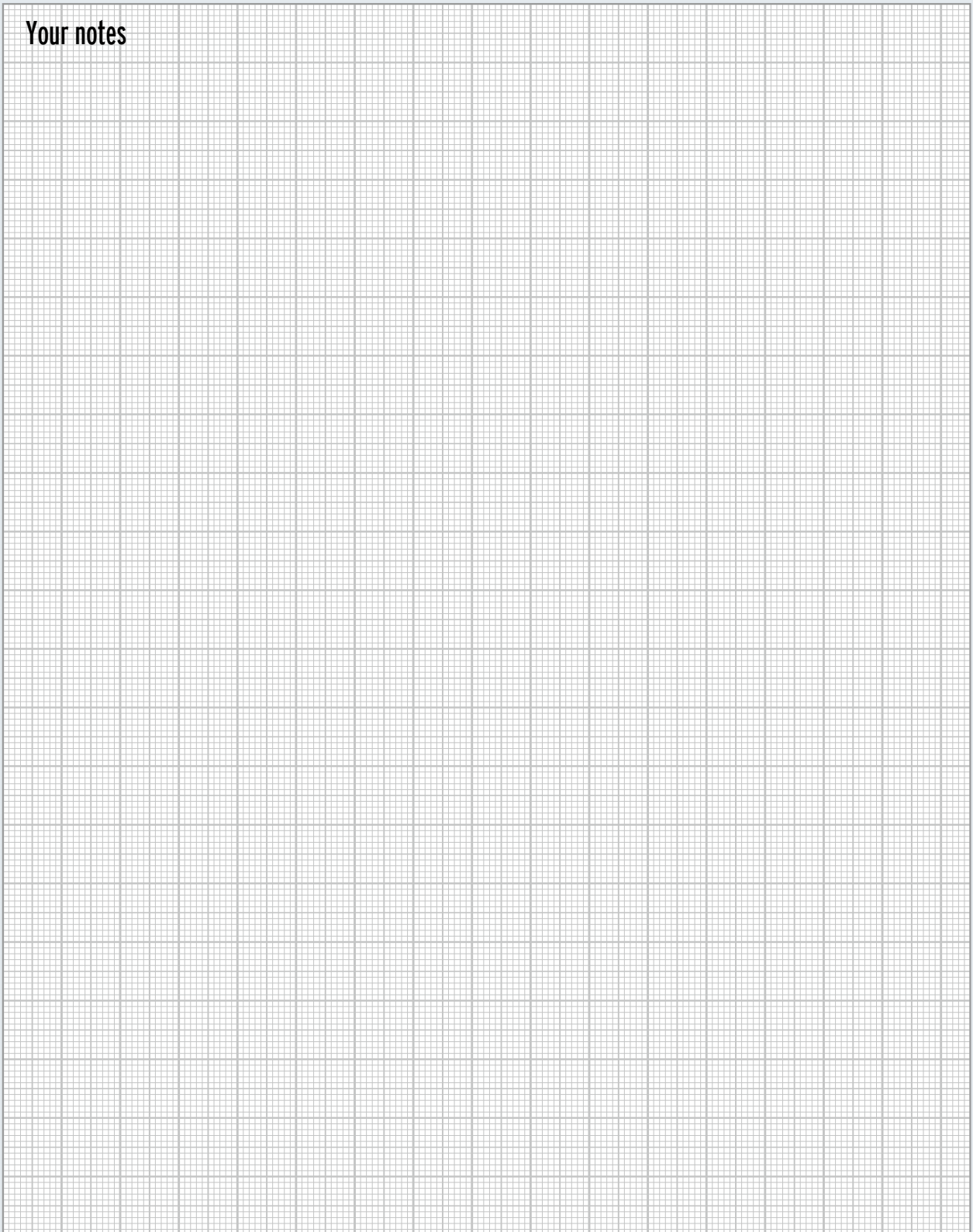
 **Chains with S hooks or key rings**
made of stainless steel

Order number	Length	Material
KNG328SS	328	SS
KNG328SH	328	SS

 **Tank wagon steam adaptors**
Frame made of zinc-plated steel with brass connection piece

Order number	Size	Material
EKV 10	DN 25-G 1" AG1	ST/MS
EKA 10	DN 25-G 1" AG1	MS
EKW 10	G1" IT/ETx45° 1	MS

Your notes



Nominal width DN (NW)	External diameter D [mm]	Hole circle k [mm]	Sealing surface d [mm]	Number of holes n	Bore d2 [mm]	Standard / pressure rating
15 (1/2")	95	65	45	4	14	EN PN 40
	88.9	60.3	34.9	4	15.9	ANSI 150
	95.3	66.7	34.9	4	15.9	ANSI 300
20 (3/4")	105	75	58	4	14	EN PN 40
	98.4	69.9	42.9	4	15.9	ANSI 150
	117.5	82.5	42.9	4	19	ANSI 300
25 (1")	115	85	68	4	14	EN PN 40
	108	79.4	50.8	4	15.9	ANSI 150
	123.8	88.9	50.8	4	19	ANSI 300
32 (1 1/4")	140	100	78	4	18	EN PN 40
	117.5	88.9	63.5	4	15.9	ANSI 150
	133.4	96.4	63.5	4	19	ANSI 300
40 (1 1/2")	150	110	88	4	18	EN PN 40
	127	98.4	73	4	15.9	ANSI 150
	155.6	114.3	73	4	22.2	ANSI 300
50 (2")	165	125	102	4	18	EN PN 16
	165	125	102	4	18	EN PN 40
	152.4	120.7	92.1	4	19	ANSI 150
	165.1	127	92.1	8	19	ANSI 300
65 (2 1/2")	185	145	122	8	18	EN PN 16
	185	145	122	8	18	EN PN 40
	177.8	139.7	104.8	4	19	ANSI 150
	190.5	149.2	104.8	8	22.2	ANSI 300
80 (3")	200	160	138	8	18	EN PN 16
	200	160	138	8	18	EN PN 40
	190.5	152.4	127	4	19	ANSI 150
	209.6	168.3	127	8	22.2	ANSI 300
100 (4")	220	180	158	8	18	EN PN 16
	235	190	162	8	22	EN PN 40
	228.6	190.5	157.2	8	19	ANSI 150
	254	200	157.2	8	22.2	ANSI 300
125 (5")	250	210	188	8	18	EN PN 16
	270	220	188	8	26	EN PN 40
	254	215.9	185.7	8	22.2	ANSI 150
	279.4	235	185.7	8	22.2	ANSI 300
150 (6")	285	240	212	8	22	EN PN 16
	300	250	218	8	26	EN PN 40
	279.4	241.3	215.9	8	22.2	ANSI 150
	317.5	269.9	215.9	12	22.2	ANSI 300
200 (8")	340	295	268	8	22	EN PN 10
	340	295	268	12	22	EN PN 16
	375	320	285	12	30	EN PN 40
	342.9	298.5	269.9	8	22.2	ANSI 150
	381	330.2	269.9	12	25.4	ANSI 300

Technical data Thread dimensions

¹ Thread: G = ISO 228-1,
R = ISO 7-1, NPT ≈ ASME B1.20.1



Thread dimensions, common
thread dimensions

ISO 228-1 ET - IT Cyl. male/female	ISO 7-1		External Ø D	Flank Ø D2	Core Ø D1	Pitch P	Number of turns on 25.4 mm Z	Thread depth H1
	External thread conical male	Internal thread cyli. female						
G 1/16	R 1/16	Rp 1/16	7.72	7.14	6.56	0.91	28	0.58
G 1/8	R 1/8	Rp 1/8	9.73	9.15	8.57	0.91	28	0.58
G 1/4	R 1/4	Rp 1/4	13.16	12.3	11.45	1.34	19	0.86
G 3/8	R 3/8	Rp 3/8	16.66	15.81	14.95	1.34	19	0.86
G 1/2	R 1/2	Rp 1/2	20.96	19.79	18.63	1.81	14	1.16
G 3/4	R 3/4	Rp 3/4	26.44	25.28	24.12	1.81	14	1.16
G 1	R 1	Rp 1	33.25	31.77	30.29	2.31	11	1.48
G 1 1/4	R 1 1/4	Rp 1 1/4	41.91	40.43	38.95	2.31	11	1.48
G 1 1/2	R 1 1/2	Rp 1 1/2	47.8	46.32	44.85	2.31	11	1.48
G 2	R 2	Rp 2	59.61	58.14	56.66	2.31	11	1.48
G 2 1/2	R 2 1/2	Rp 2 1/2	75.18	73.71	72.23	2.31	11	1.48
G 3	R 3	Rp 3	87.88	86.41	84.93	2.31	11	1.48
G 4	R 4	Rp 4	113.03	111.55	110.07	2.31	11	1.48
G 5	R 5	Rp 5	138.43	136.95	135.37	2.31	11	1.48
G 6	R 6	Rp 6	163.83	162.35	160.87	2.31	11	1.48

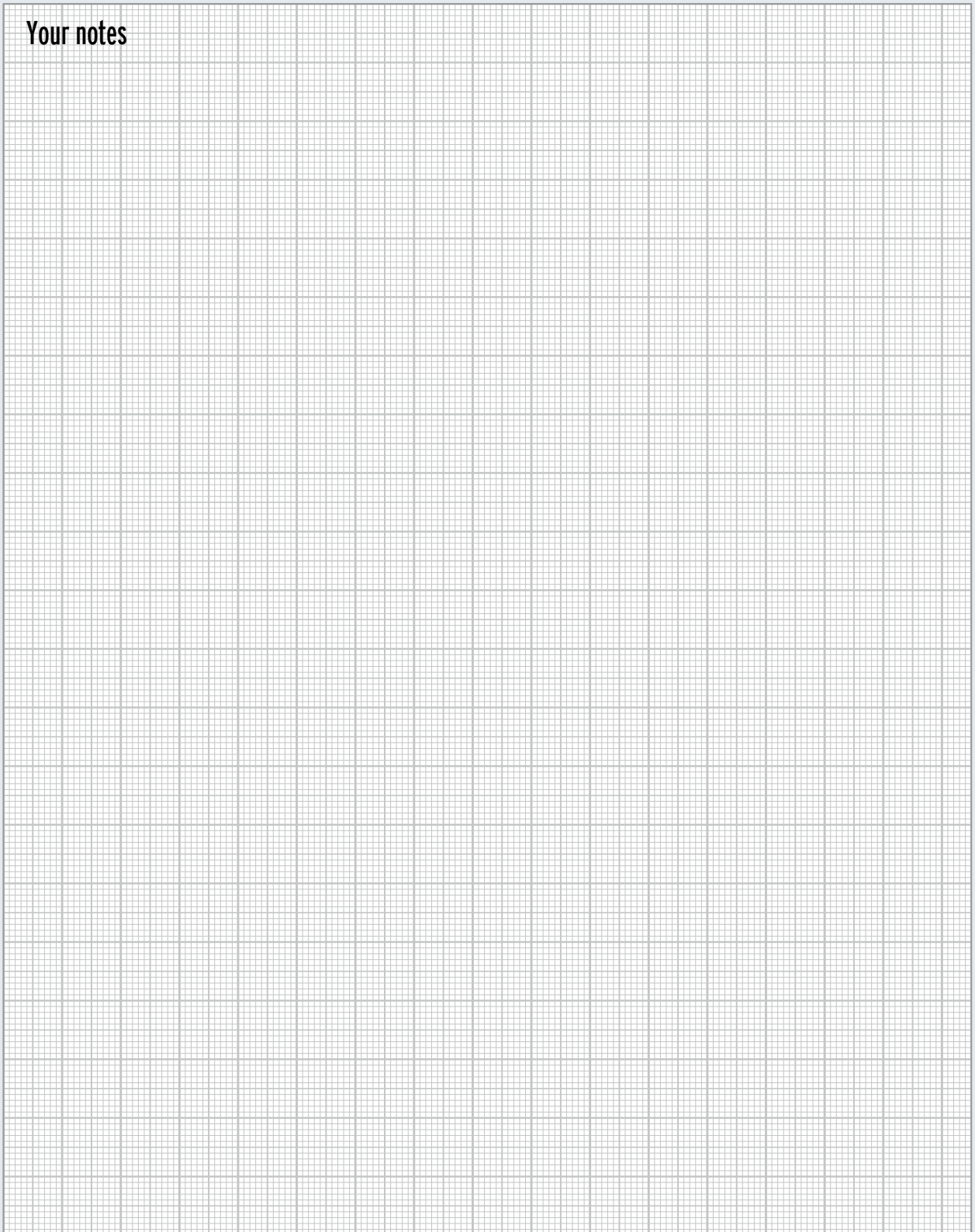
Materials

Materials		
ASTM	Polymer designation	Properties
CSM	Chlorosulfonated polyethylene rubber	High acid, weather, ageing and heat resistance. Good swell resistance with oils, greases and fuels.
EPDM	Ethylene propylene diene rubber	High ageing, weather and heat resistance. Good cold flexibility. Not swell-resistant to oils, greases and fuels. High resistance to hot water, steam, acids and alkalis.
FKM	Fluororubber	Very high chemicals and heat resistance.
FFKM	Perfluorinated rubber	Best resistance to chemicals. Bad mechanical properties.
NBR	Nitrile butadiene rubber	High swell-resistance to oils, greases and fuels.
PTFE	Polytetrafluorethylene	Very good resistance to chemicals even at high temperatures.
PA	Polyamide	High mechanical stability and hardness and simultaneously extreme toughness. Heat ageing resistance.
PUR	Polyurethane elastomers	Good resistance to oils, greases and fuels. High mechanical stability.
IT	High-pressure sealing plate made of aramid fibres, bound by means of NBR rubber	High temperature, pressure and oil resistance as flat seal.

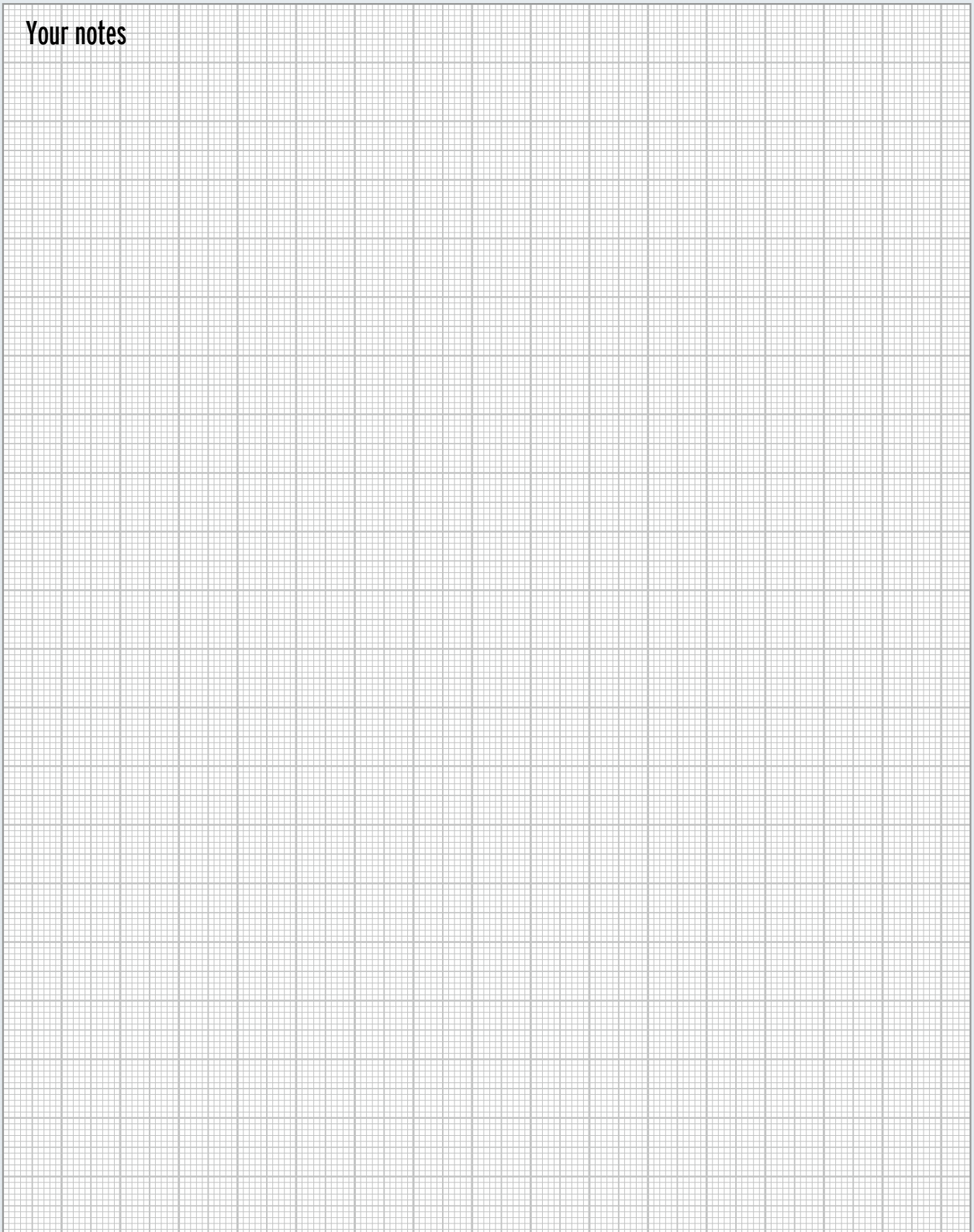
Materials		
Material number	DIN	AISI
1.4301	X 5 CrNi 18-10	304
1.4306	X 2 CrNi 19-11	304 L
1.4310	X 10 CrNi 18-8	301
1.4541	X 6 CrNiTi 18-10	321
1.4571	X 6 CrNiMoTi 17-12-2	316 Ti
1.4401	X 5 CrNiMo 17-12-2	316
1.4404	X 2 CrNiMo 17-12-2	316 L
1.4408	G X 5 CrNiMo 19-11-2	CF-8 M 316 M 16 (BS)
1.4436	XCrNiMo 18 12	316
1.4435	X 2 CrNiMo 18-14-3	316 L

Abbreviations of the materials	
AL	Aluminium
ST	Steel
SS	Stainless steel
MS	Brass
PP	Polypropylene
TG	Malleable cast iron
SS/H, SS/P AND SS/TE	additional chemical-resistant coatings and/or linings at medium-contacting surfaces

Your notes



Your notes





Hose and coupling technology

Alfons Markert + Co. GmbH
Gadelander Straße 135
24539 Neumünster • Germany

Phone: +49 4321 8701-0
Fax: +49 4321 8701-149
Email: marsoflex@markert.de
Web: www.markert.de